

TTL-485-5P

RS-485 To 5V TTL Converter – DB9
Datasheet Revision 1.2

INTRODUCTION:

The SerialComm TTL-485-5P is a bi-directional externally powered RS-485 to 5V TTL converter in a 9 pin format. It can convert any standard half duplex RS-485 port to a 5V TTL signal and vice versa. The unit is externally powered with a 5V power supply. The TTL-485-5P has a DB9 male connector on the RS-485 side or 5-way terminal block and either a DB9 male connector or 5-way terminal block on the TTL side. Separate terminal blocks are included in package.

CERTIFICATIONS:



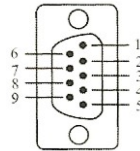
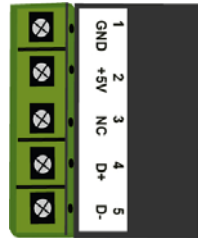
GENERAL FEATURES:

- Externally Powered with 5V Power Supply
- Data Direction, auto-turnaround, no flow control is necessary
- Plug-and-Play (Device is hot-pluggable)
- 5 Year Manufacturer's Warranty
- CE, FCC, ISO 9001 and IAF Compliance Certified
- Built-in surge protection, static protection and circuit protection
- Surface Mount Technology manufactured to ISO 9001 Standards

PINOUT CONFIGURATION:

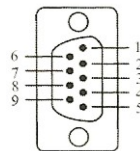
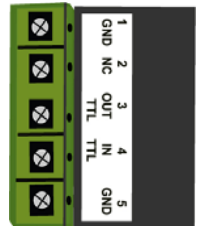
RS-485 SIDE: DB9 MALE OR TERMINAL BLOCK

SIGNAL	GND	+5V	NC	D+	D-
PIN #	1	2	3	4	5
FUNCTION	GND	+5V	NC	D+	D-



TTL SIDE: DB9 MALE OR TERMINAL BLOCK

SIGNAL	GND	NC	TTL OUT	TTL IN	GND
PIN #	1	2	3	4	5
FUNCTION	GND	NC	TTL OUT	TTL IN	GND



SPECIFICATIONS:

PART NUMBER:	TTL-485-5P
STANDARDS:	RS-485 Standard
BAUD RATES:	From 300 Baud To 115,200 Baud
POWER SOURCE:	5V External Power Source
CONNECTOR TYPES:	RS-485 Side: either DB9 Male or 5-Way Terminal Block 5V TTL Side: either DB9 Male or 5 Way Terminal Block
DISTANCE:	RS-485 Side: 4000 ft (1.2km) & 5V TTL Side: 10 ft (3m)
WEIGHT:	With Terminal Blocks: 1.7oz (50 grams) Without Terminal Block: 0.8oz (24 grams)
DIMENSIONS:	With Terminal Blocks: 3.98" X 1.35" X 0.70" (99.8 mm X 34.1 mm X 17.6 mm) Without Terminal Blocks: 2.47" X 1.33" X 0.70" (62.8 mm X 33.8 mm X 17.8 mm)
OPERATING TEMP.:	-4° F to 140° F (-20°C to 60° C)
OPERATING HUMIDITY:	5% To 95% - No Condensation

TROUBLESHOOTING INSTRUCTIONS:

Connect TTL-485-5P to RS-485 port. Tie signals TTL OUT to TTL IN of the TTL-485-5P. Using HyperTerminal type program send a character from one and see if it echoes to the other.

APPLICATIONS:

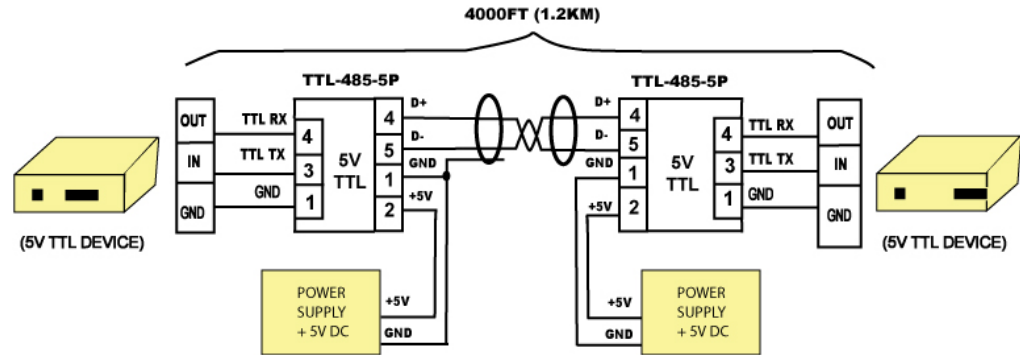


FIGURE 1: EXTENDING TTL DATA DISTANCE

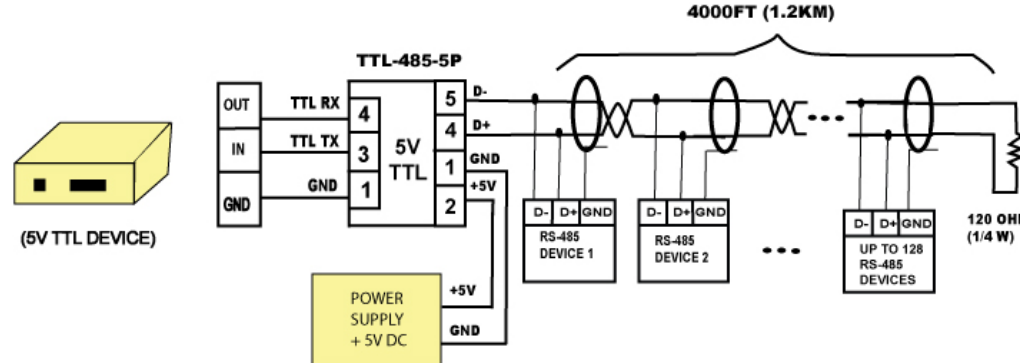


FIGURE 2: MASTER/SLAVE MULTIPLE DROP CONFIGURATION