

**Serial Comm**®  
Data Conversion Experts

MODEL: CON-485-PI9

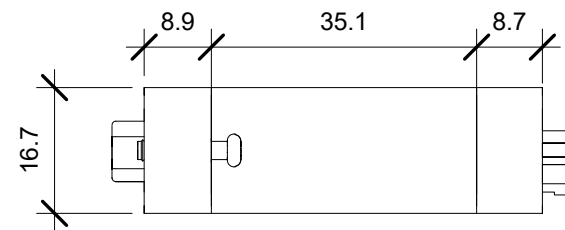
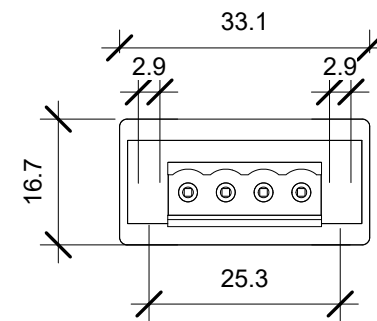
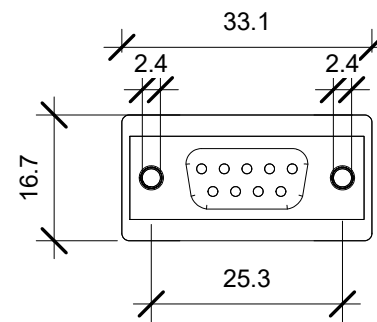
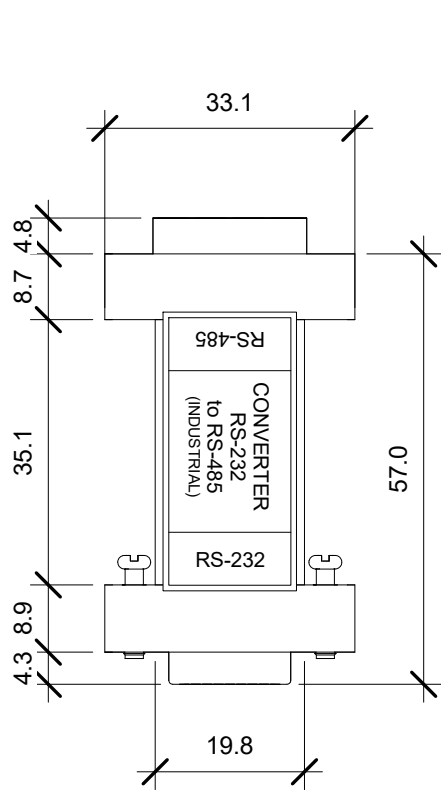
DESCRIPTION: Compact RS232 to RS485 (4-Position Terminal Block)

SCALE: 1:1

UNIT: mm

ISSUE DATE: 11/06/2016

REV. NO.: 1.00



**Serial Comm**®  
Data Conversion Experts

MODEL: CON-485-PI9

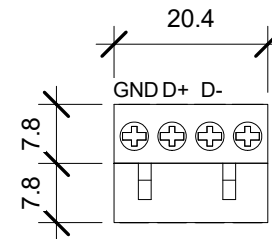
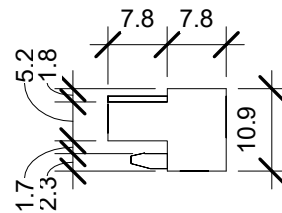
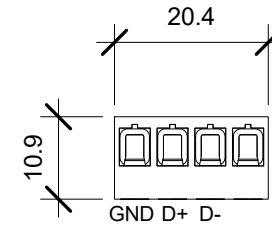
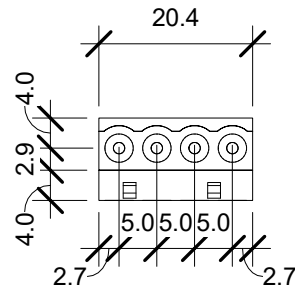
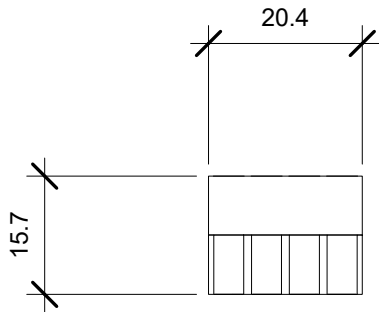
DESCRIPTION: Compact RS232 to RS485 (No Terminal Block)

SCALE: 1:1

UNIT: mm

ISSUE DATE: 11/06/2016

REV. NO.: 1.00



**Serial Comm**®  
Data Conversion Experts

MODEL: CON-485-PI9

DESCRIPTION: 4-Position Terminal Block

SCALE: 1:1

UNIT: mm

ISSUE DATE: 11/06/2016

REV. NO.: 1.00