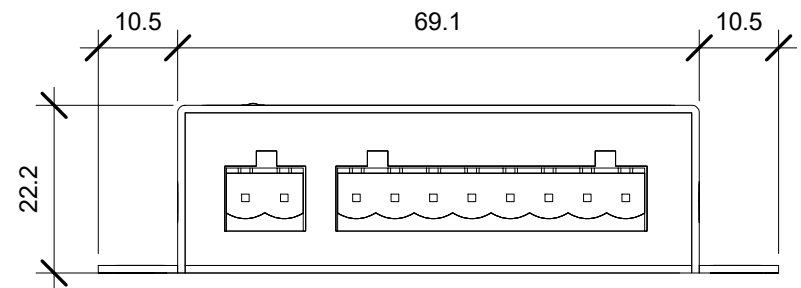
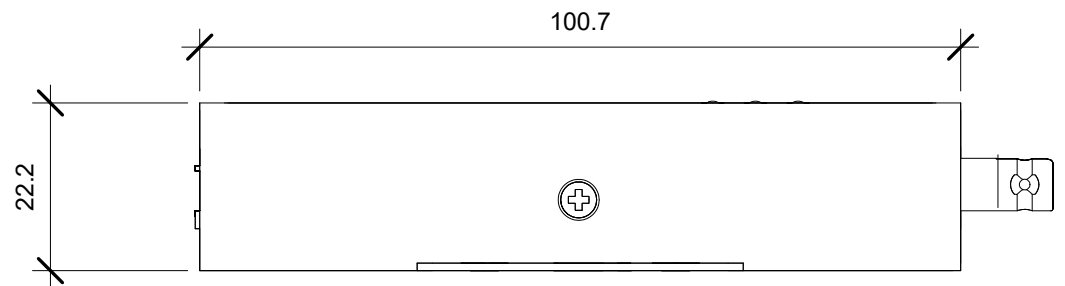
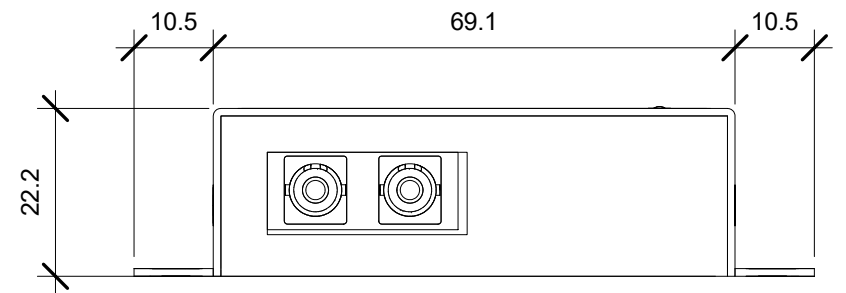
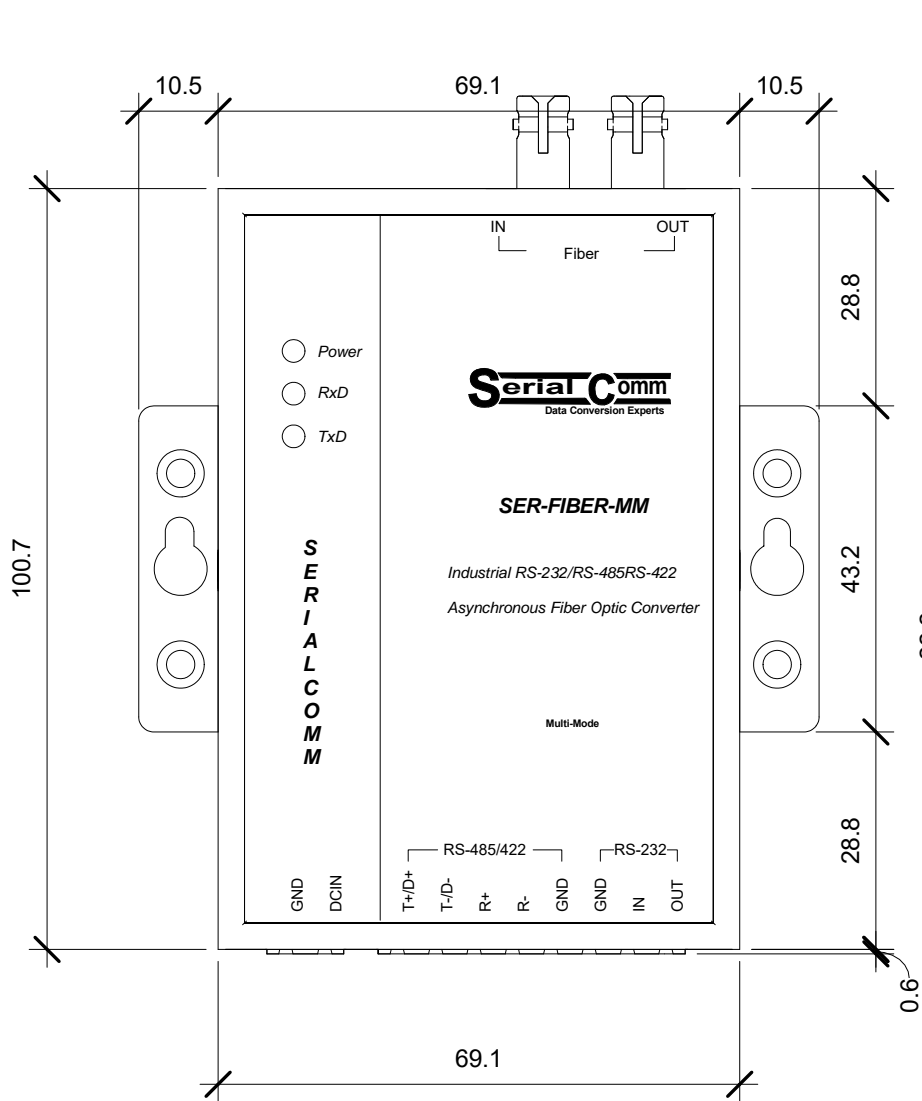


Serial Comm®
 Data Conversion Experts

MODEL: SER-FIBER-MM-ST	
DESCRIPTION: Industrial RS-232/RS-485/RS-422 To Fiber Optic with Terminal Blocks (MM ST)	
SCALE: 1:1	UNIT: mm
ISSUE DATE: 03/05/2017	REV. NO.: 1.00



Serial Comm®
 Data Conversion Experts

MODEL: SER-FIBER-MM-ST

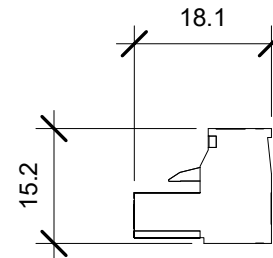
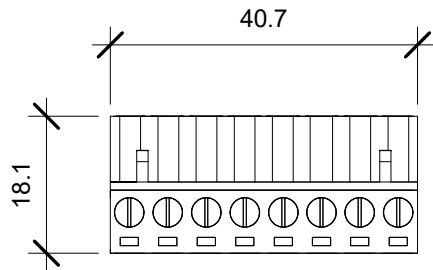
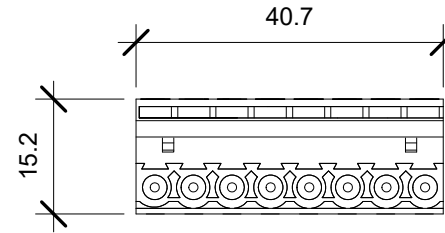
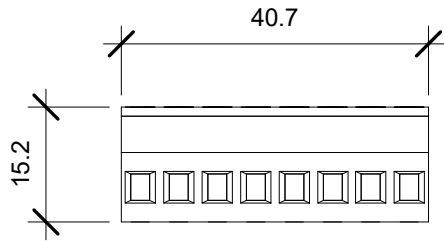
DESCRIPTION: Industrial RS-232/RS-485/RS-422 To Fiber Optic without Terminal Blocks (MM ST)

SCALE: 1:1

UNIT: mm

ISSUE DATE: 03/05/2017

REV. NO.: 1.00



Serial Comm®
Data Conversion Experts

MODEL: SER-FIBER-MM-ST

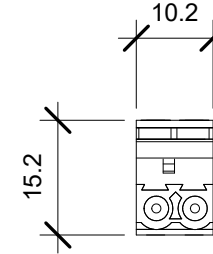
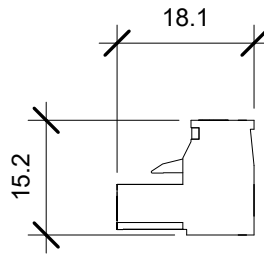
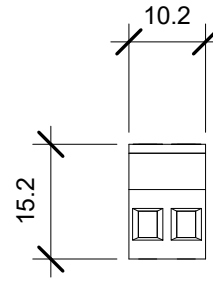
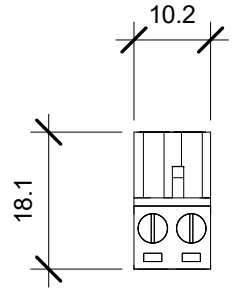
DESCRIPTION: 8-Position Terminal Block

SCALE: 1:1

UNIT: mm

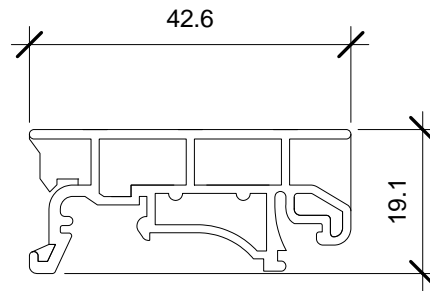
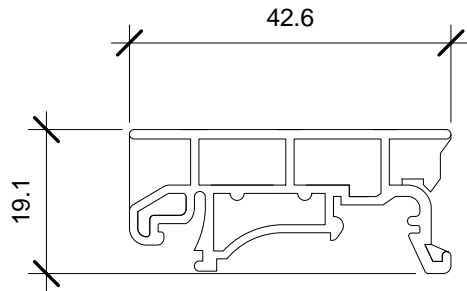
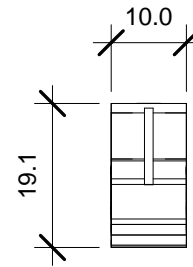
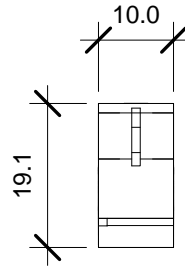
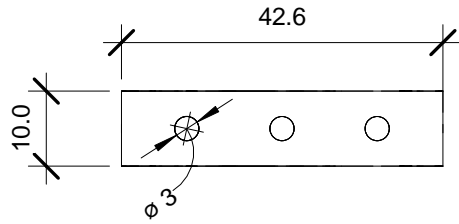
ISSUE DATE: 03/05/2017

REV. NO.: 1.00



Serial Comm®
Data Conversion Experts

MODEL: SER-FIBER-MM-ST	
DESCRIPTION: 2-Position Terminal Block	
SCALE: 1:1	UNIT: mm
ISSUE DATE: 03/05/2017	REV. NO.: 1.00



Serial Comm®
Data Conversion Experts

MODEL: DIN Bracket

DESCRIPTION: Optional DIN Rail Bracket

SCALE: 1:1

UNIT: mm

ISSUE DATE: 11/08/2016

REV. NO.: 1.00