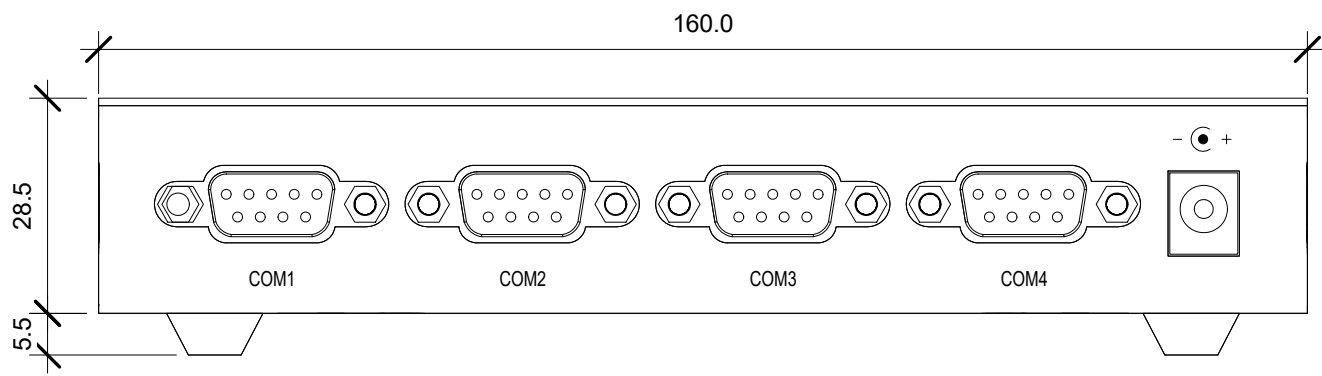
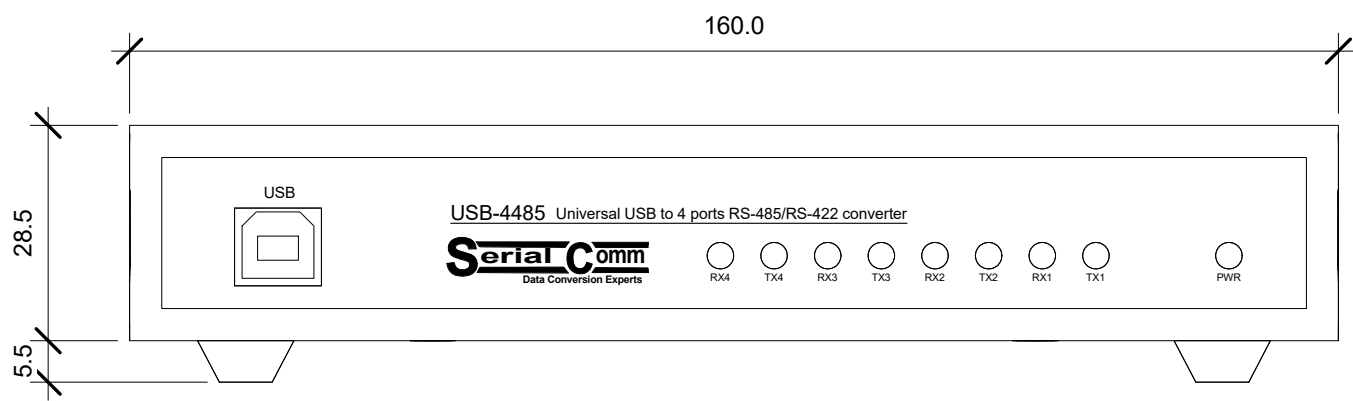


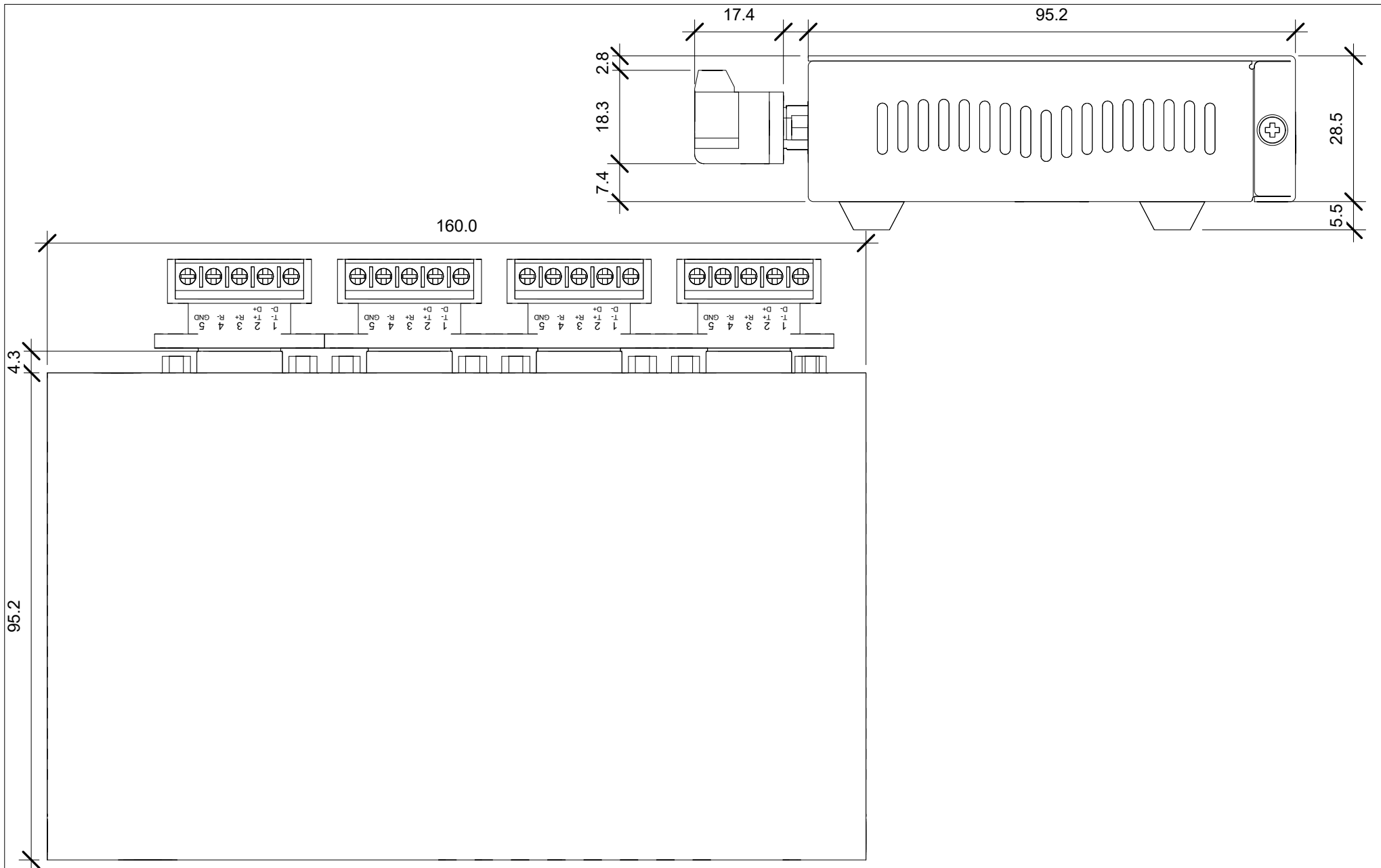
**Serial Comm**®  
Data Conversion Experts

MODEL: USB-4485	
DESCRIPTION: USB to 4-Port RS485/RS422 (No Terminal Blocks)	
SCALE: 1:1	UNIT: mm
ISSUE DATE: 11/08/2016	REV. NO.: 1.00



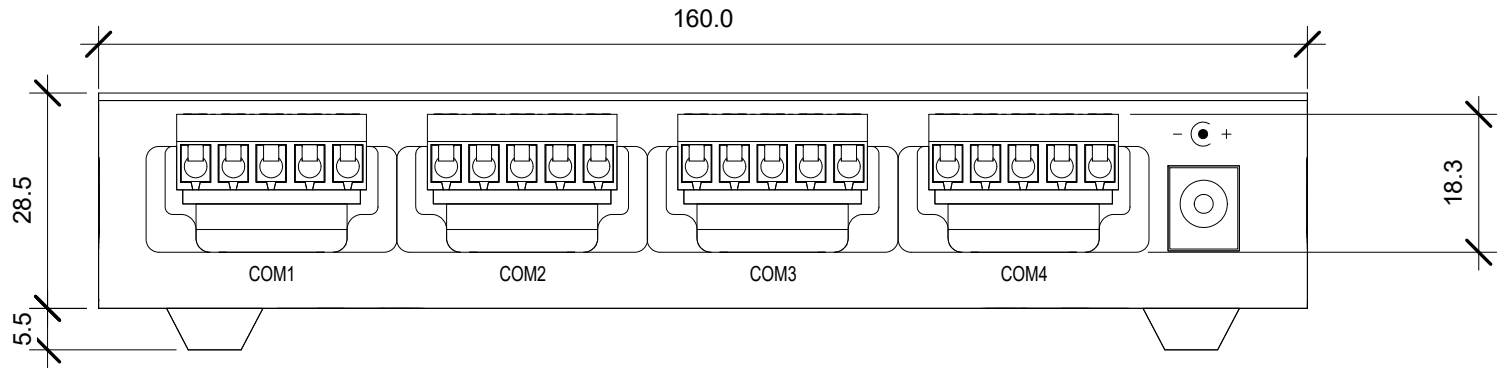
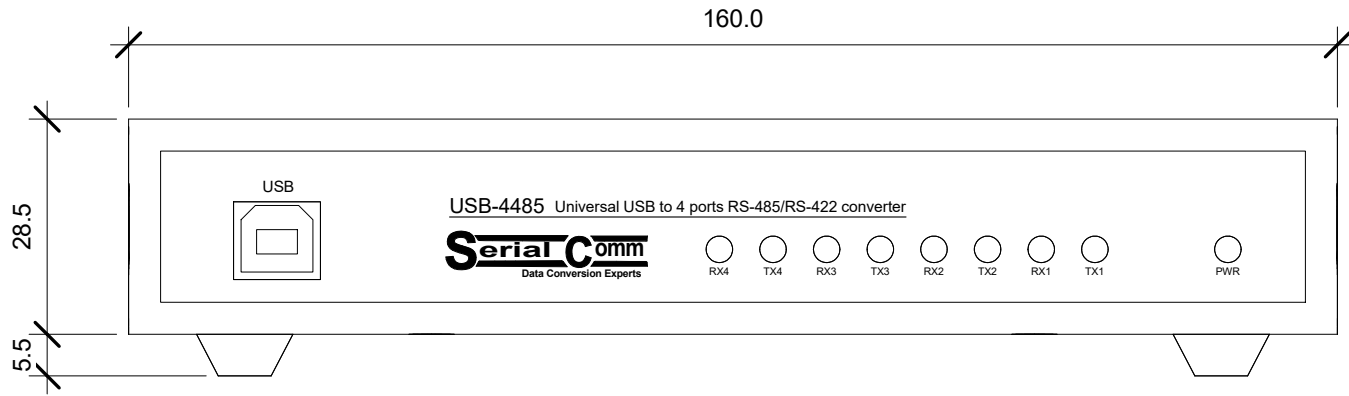
**Serial Comm**®  
Data Conversion Experts

MODEL: USB-4485	
DESCRIPTION: USB to 4-Port RS485/RS422 (No Terminal Blocks)	
SCALE: 1:1	UNIT: mm
ISSUE DATE: 11/08/2016	REV. NO.: 1.00



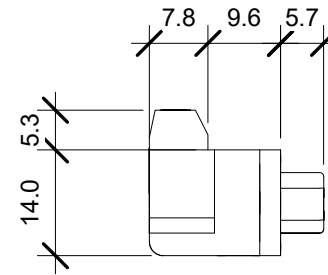
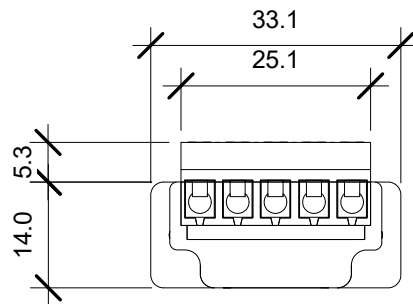
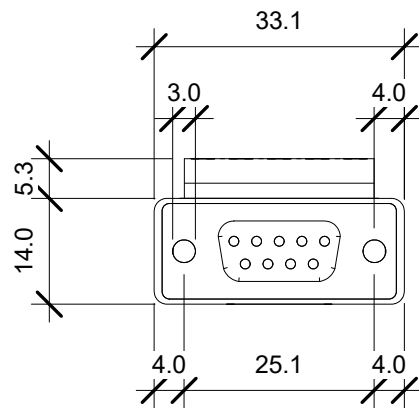
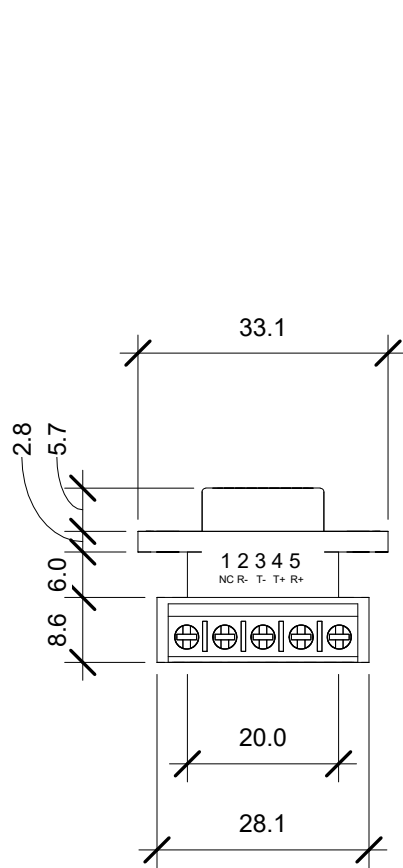
**Serial Comm**®  
Data Conversion Experts

MODEL: USB-4485	
DESCRIPTION: USB to 4-Port RS485/RS422 (Terminal Blocks - Rugged)	
SCALE: 1:1	UNIT: mm
ISSUE DATE: 11/08/2016	REV. NO.: 1.00



**Serial Comm**®  
Data Conversion Experts

MODEL: USB-4485	
DESCRIPTION: USB to 4-Port RS485/RS422 (Terminal Blocks - Rugged)	
SCALE: 1:1	UNIT: mm
ISSUE DATE: 11/08/2016	REV. NO.: 1.00



**Serial Comm**®  
Data Conversion Experts

MODEL: USB-4485

DESCRIPTION: 5-Position Terminal Block

SCALE: 1:1

UNIT: mm

ISSUE DATE: 11/08/2016

REV. NO.: 1.00