

Serial Comm®
 Data Conversion Experts

MODEL: CON-485/422-REP

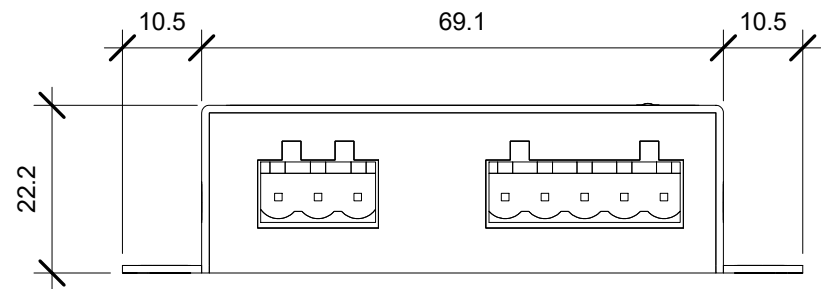
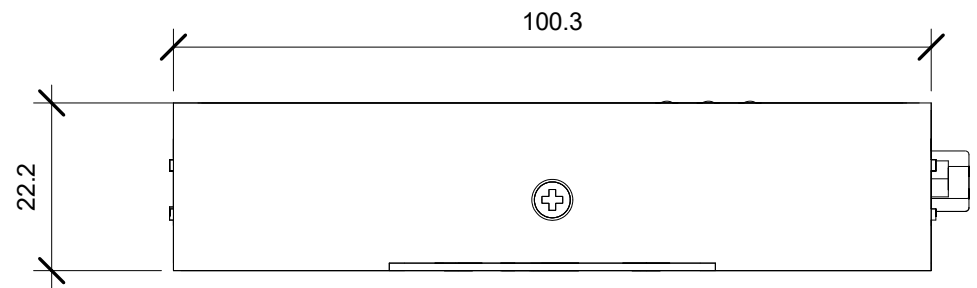
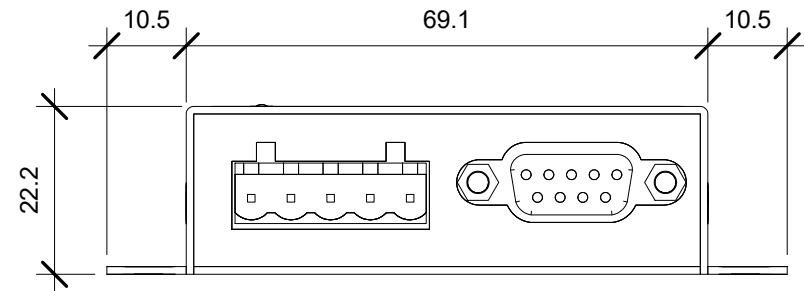
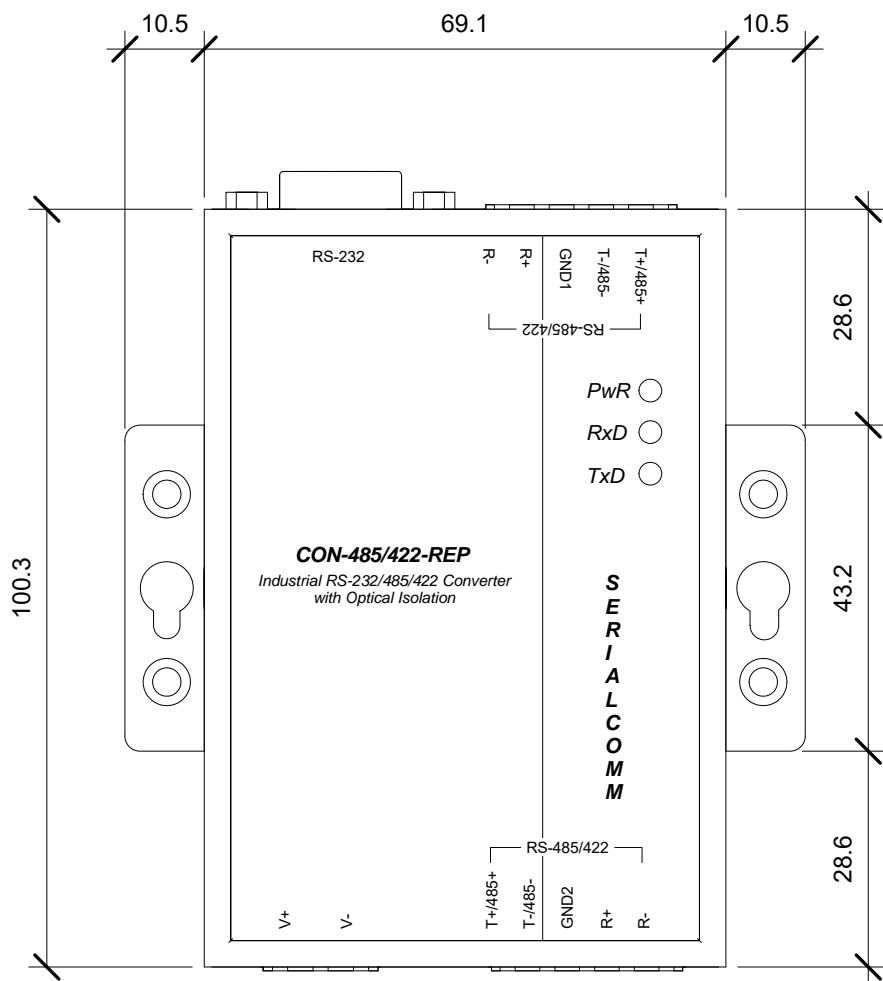
DESCRIPTION: Rugged Powered RS232 to RS485/RS422 (Terminal Blocks)

SCALE: 1:1

UNIT: mm

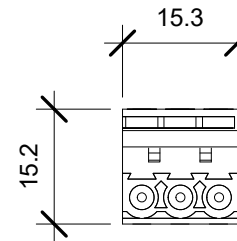
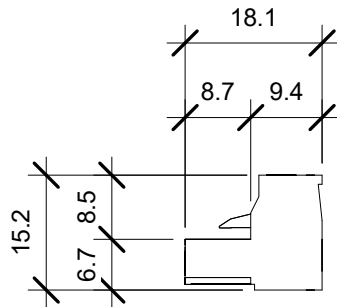
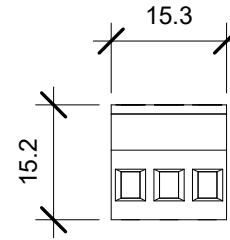
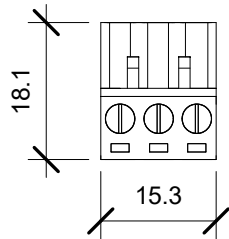
ISSUE DATE: 11/08/2016

REV. NO.: 1.00



Serial Comm®
Data Conversion Experts

MODEL: CON-485/422-REP	
DESCRIPTION: Rugged Powered RS232 to RS485/RS422 (No Terminal Blocks)	
SCALE: 1:1	UNIT: mm
ISSUE DATE: 11/08/2016	REV. NO.: 1.00



Serial Comm®
Data Conversion Experts

MODEL: CON-485/422-REP

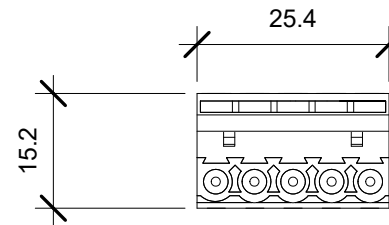
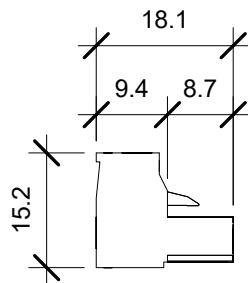
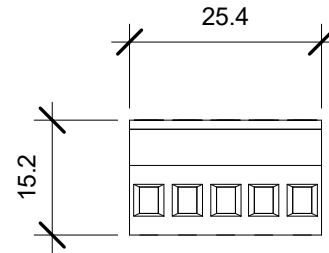
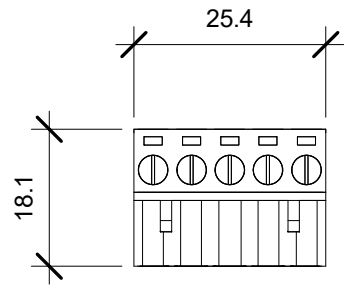
DESCRIPTION: 3-Position Terminal Block

SCALE: 1:1

UNIT: mm

ISSUE DATE: 11/08/2016

REV. NO.: 1.00



Serial Comm®
Data Conversion Experts

MODEL: CON-485/422-REP

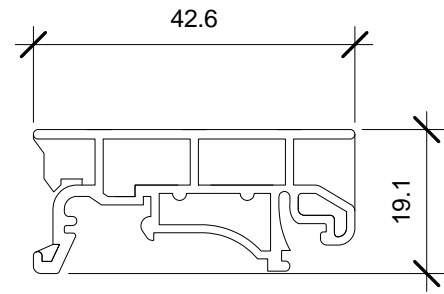
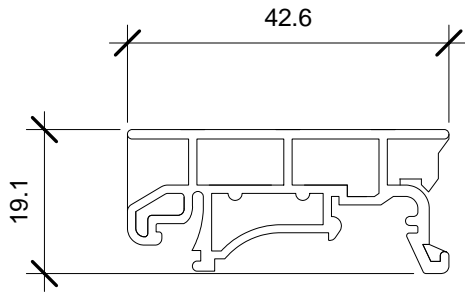
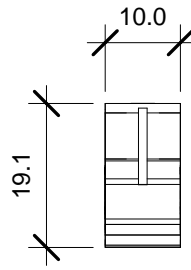
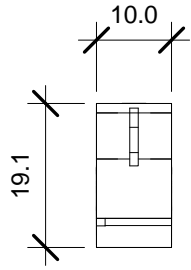
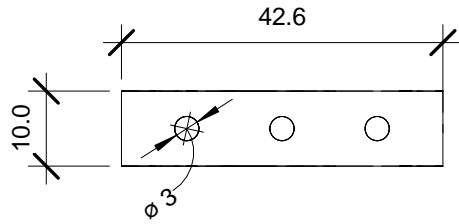
DESCRIPTION: 5-Position Terminal Block

SCALE: 1:1

UNIT: mm

ISSUE DATE: 11/08/2016

REV. NO.: 1.00



Serial Comm®
Data Conversion Experts

MODEL: DIN Bracket	
DESCRIPTION: Optional DIN Rail Bracket	
SCALE: 1:1	UNIT: mm
ISSUE DATE: 11/08/2016	REV. NO.: 1.00