

Serial Comm®
 Data Conversion Experts

MODEL: ETH-SER-EE9

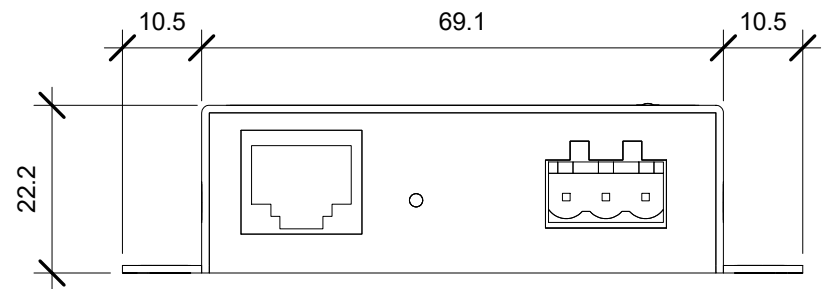
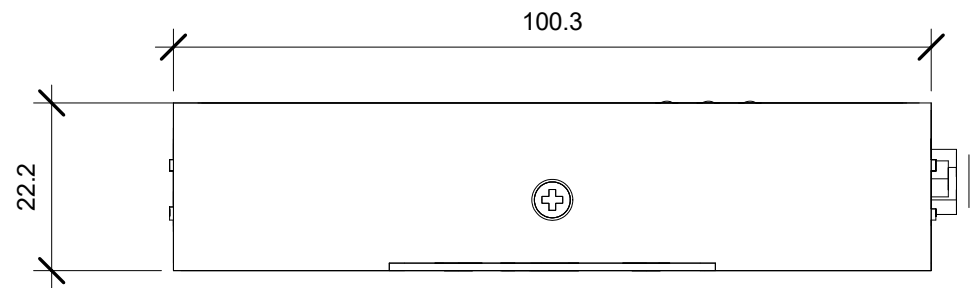
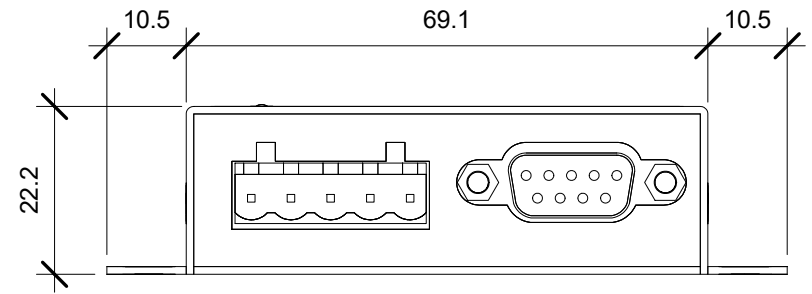
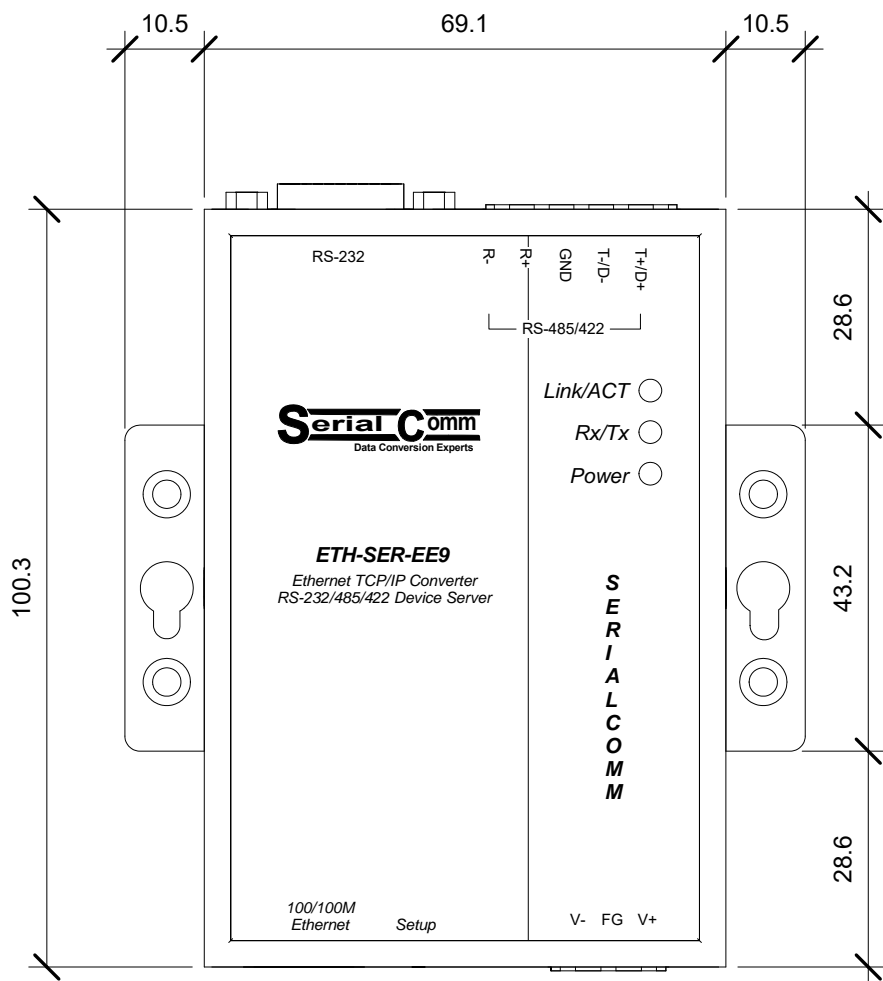
DESCRIPTION: Serial to Ethernet (Terminal Blocks)

SCALE: 1:1

UNIT: mm

ISSUE DATE: 11/08/2016

REV. NO.: 1.00



Serial Comm®
Data Conversion Experts

MODEL: ETH-SER-EE9

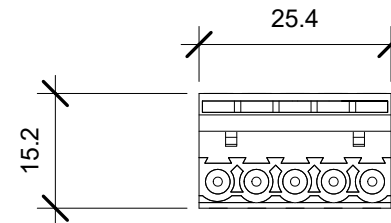
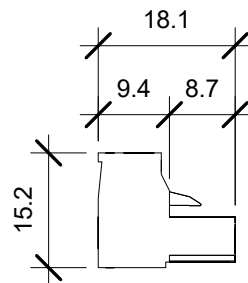
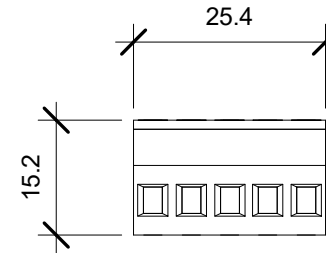
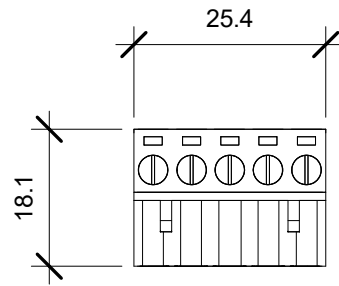
DESCRIPTION: Serial to Ethernet (No Terminal Blocks)

SCALE: 1:1

UNIT: mm

ISSUE DATE: 11/08/2016

REV. NO.: 1.00



Serial Comm®
Data Conversion Experts

MODEL: ETH-SER-EE9

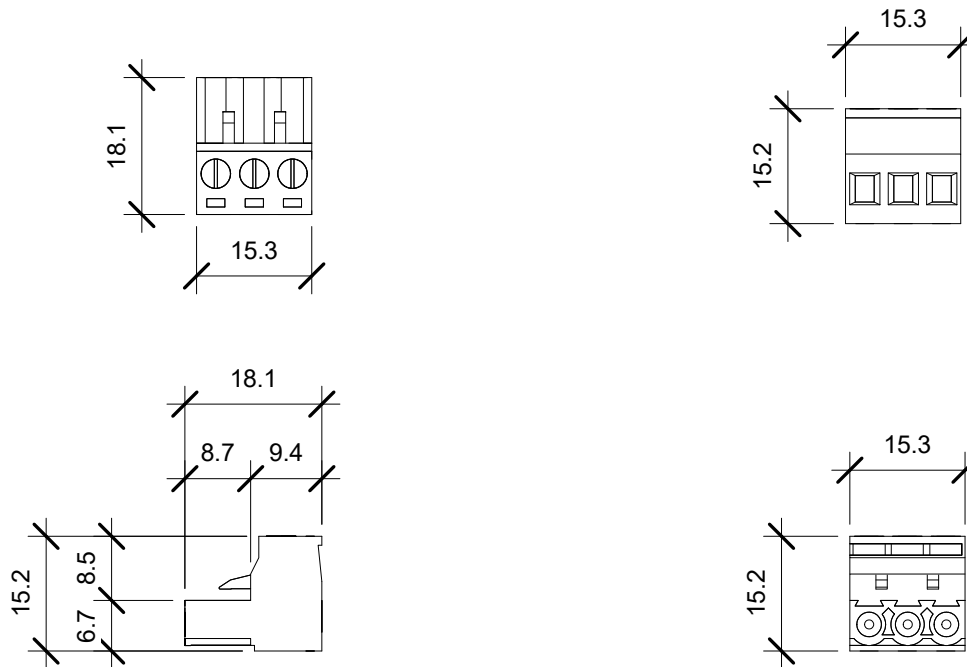
DESCRIPTION: 5-Position Terminal Block

SCALE: 1:1

UNIT: mm

ISSUE DATE: 11/08/2016

REV. NO.: 1.00



Serial Comm®
Data Conversion Experts

MODEL: ETH-SER-EE9

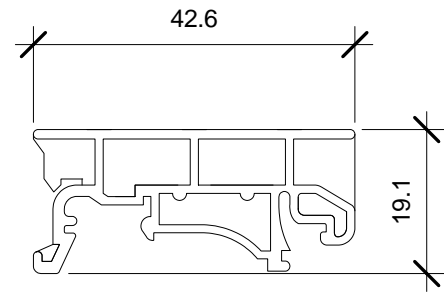
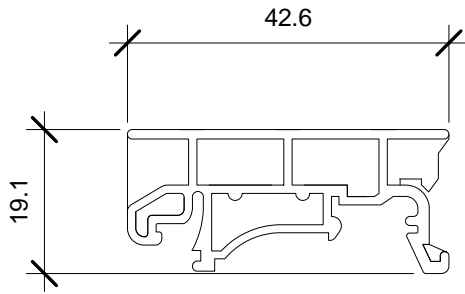
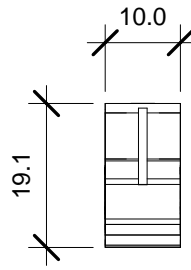
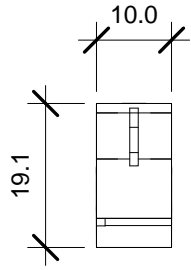
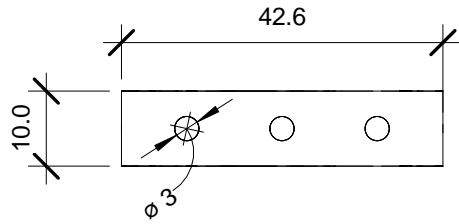
DESCRIPTION: 3-Position Terminal Block

SCALE: 1:1

UNIT: mm

ISSUE DATE: 11/08/2016

REV. NO.: 1.00



Serial Comm®
Data Conversion Experts

MODEL: DIN Bracket	
DESCRIPTION: Optional DIN Rail Bracket	
SCALE: 1:1	UNIT: mm
ISSUE DATE: 11/08/2016	REV. NO.: 1.00