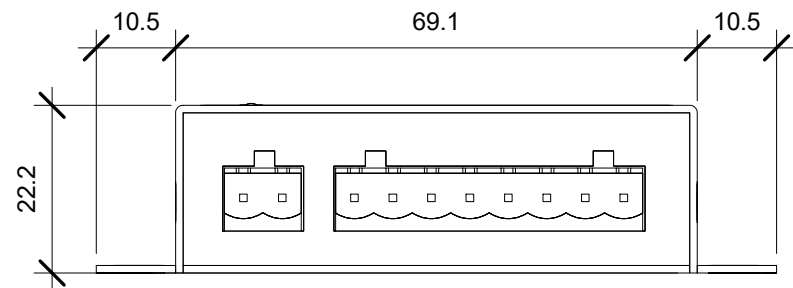
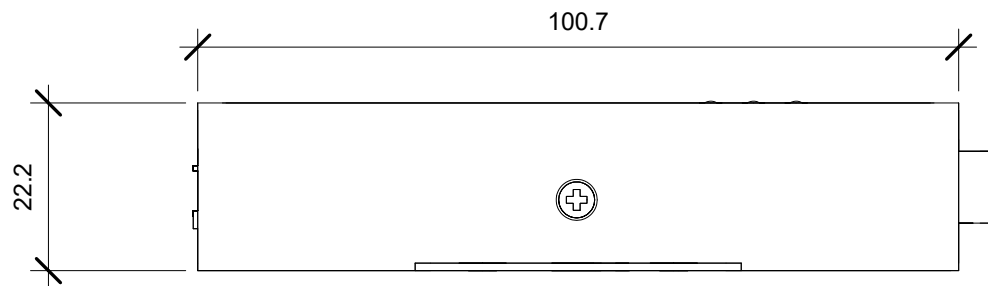
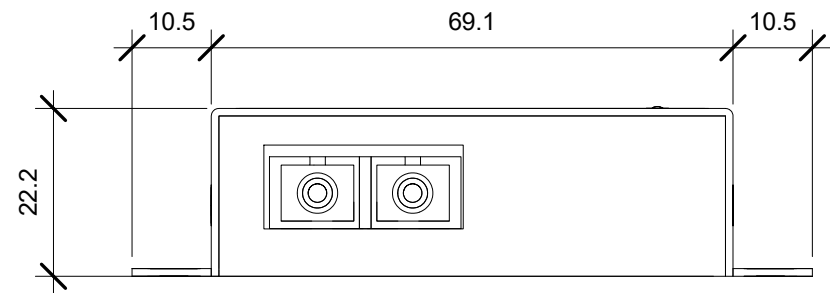
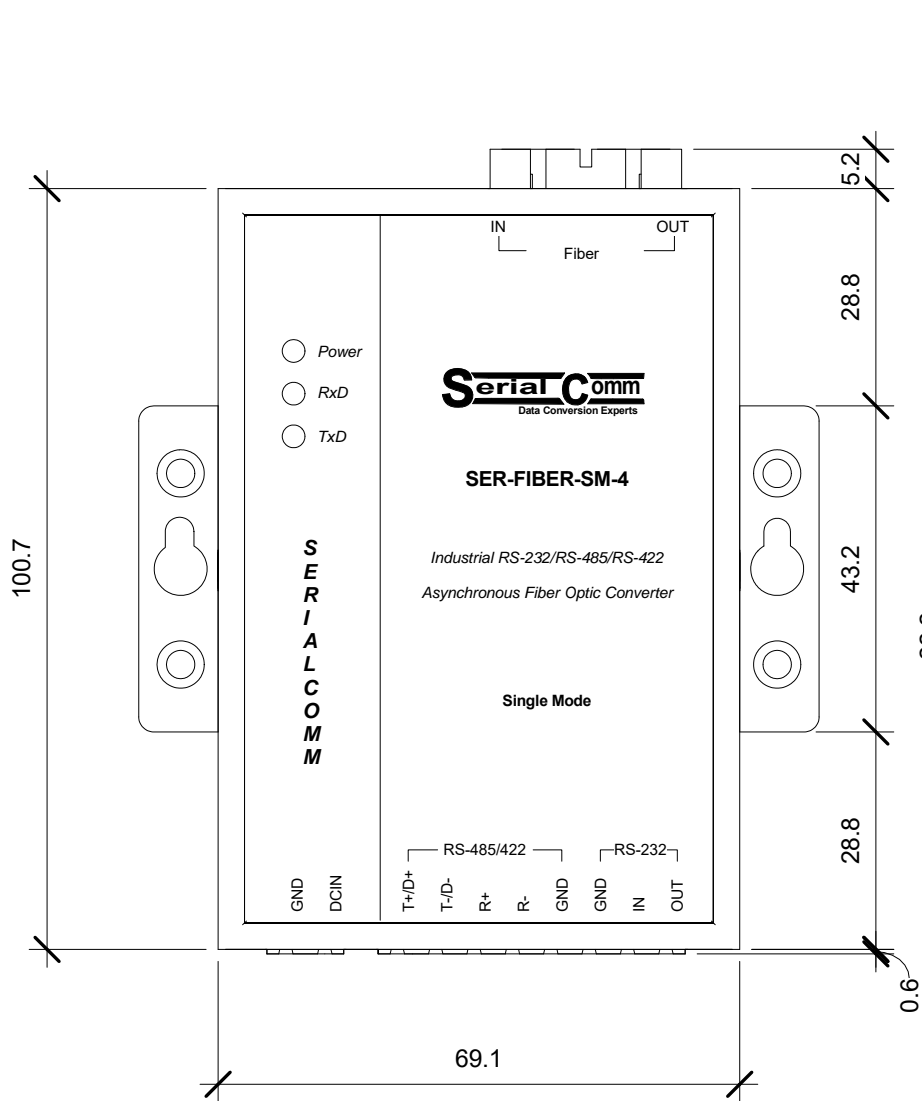


Serial Comm®
 Data Conversion Experts

MODEL: SER-FIBER-SM-4-SC	
DESCRIPTION: Industrial RS-232/RS-485/RS-422 to Fiber Optic with Terminal Blocks (SM SC) - 40KM	
SCALE: 1:1	UNIT: mm
ISSUE DATE: 06/19/2017	REV. NO.: 1.00



Serial Comm®
Data Conversion Experts

MODEL: SER-FIBER-SM-4-SC

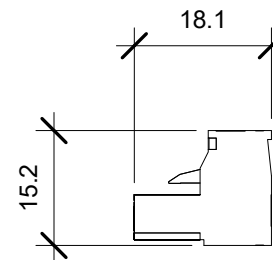
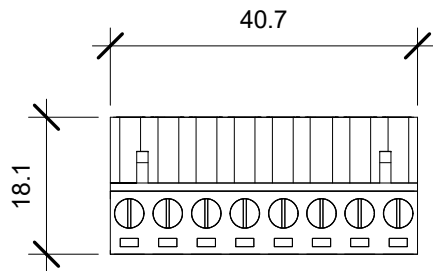
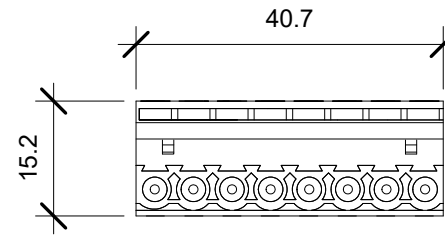
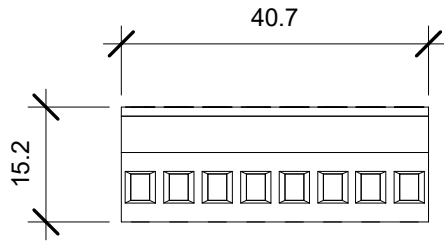
DESCRIPTION: Industrial RS-232/RS-485/RS-422 to Fiber Optic without Terminal Blocks (SM SC) - 40KM

SCALE: 1:1

UNIT: mm

ISSUE DATE: 06/19/2017

REV. NO.: 1.00



Serial Comm®
Data Conversion Experts

MODEL: SER-FIBER-SM-4-SC

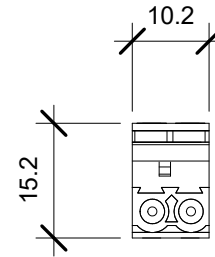
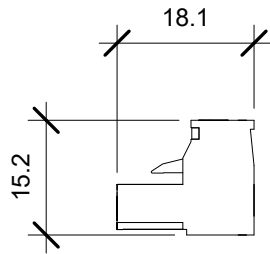
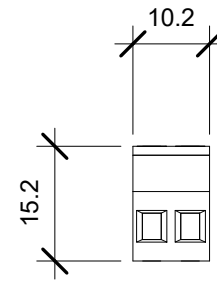
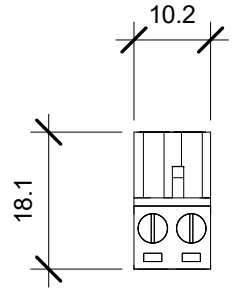
DESCRIPTION: 8-Position Terminal Block

SCALE: 1:1

UNIT: mm

ISSUE DATE: 06/19/2017

REV. NO.: 1.00



Serial Comm®
Data Conversion Experts

MODEL: SER-FIBER-SM-4-SC

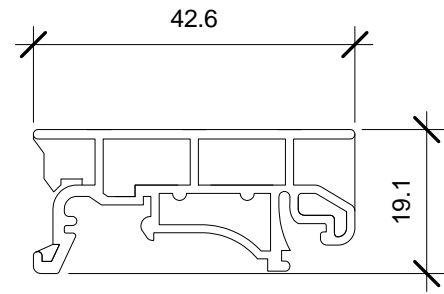
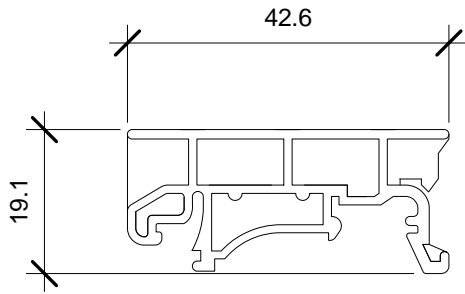
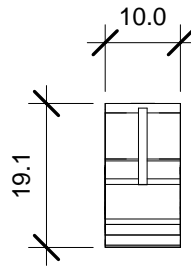
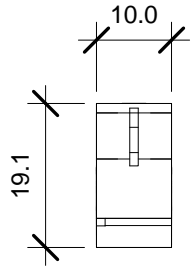
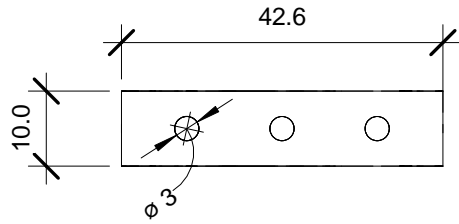
DESCRIPTION: 2-Position Terminal Block

SCALE: 1:1

UNIT: mm

ISSUE DATE: 06/19/2017

REV. NO.: 1.00



Serial Comm®
Data Conversion Experts

MODEL: DIN Bracket	
DESCRIPTION: Optional DIN Rail Bracket	
SCALE: 1:1	UNIT: mm
ISSUE DATE: 11/08/2016	REV. NO.: 1.00