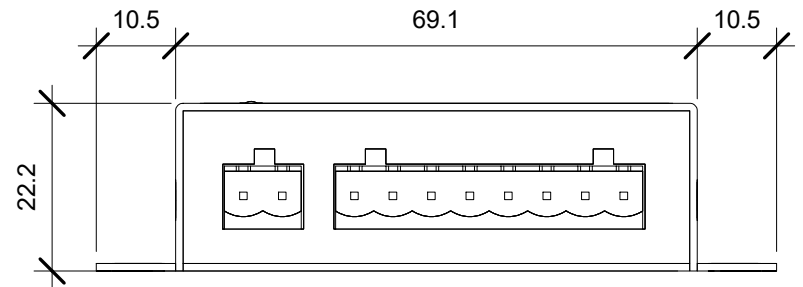
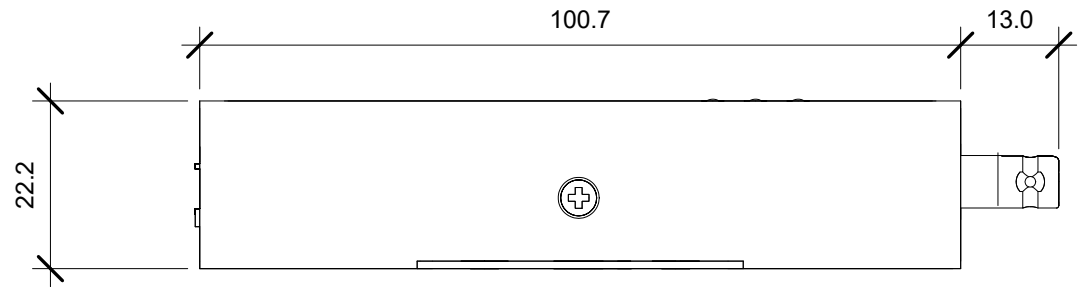
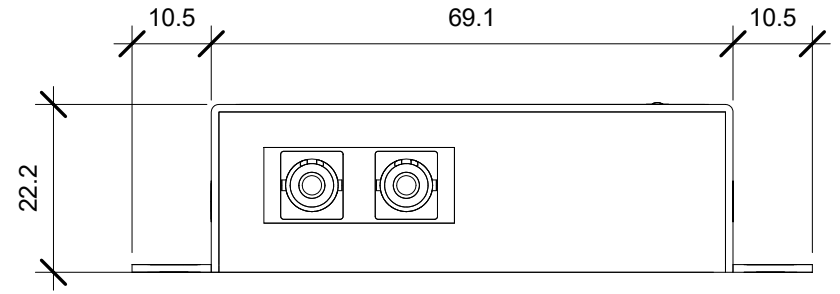
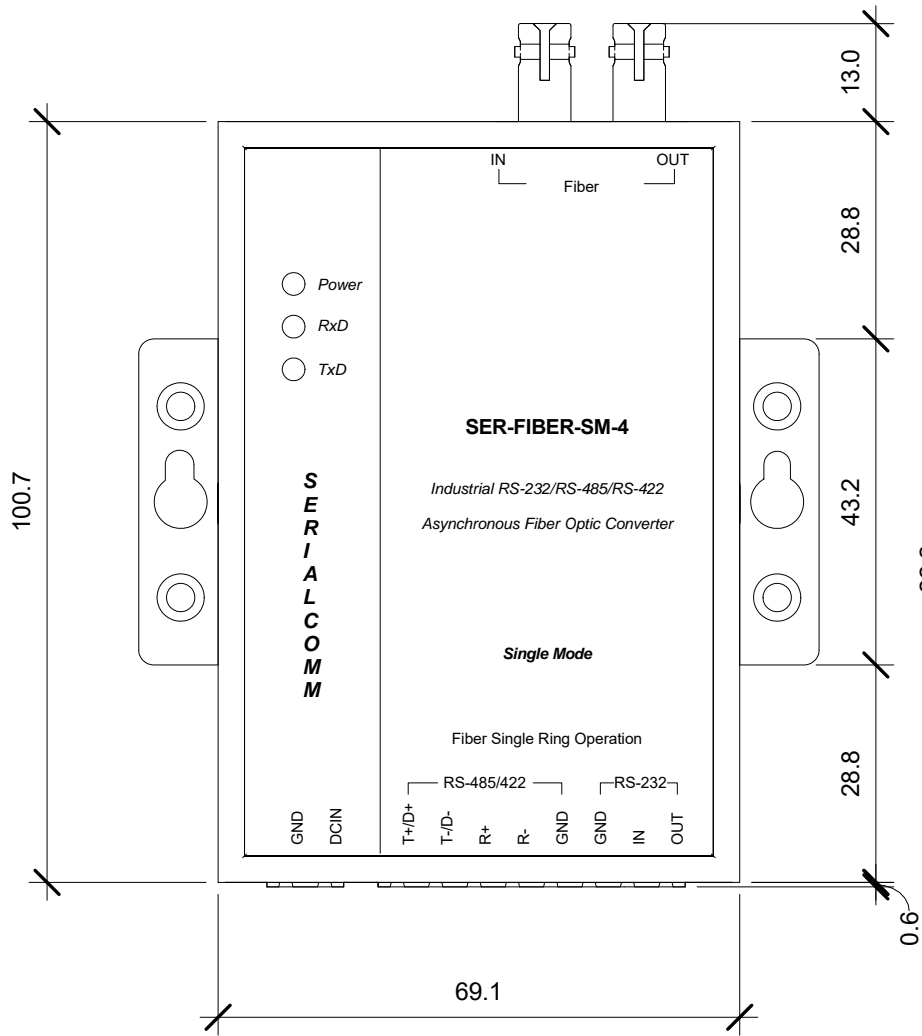


**Serial Comm**®  
Data Conversion Experts

MODEL: SER-FIBER-SM-4-ST	
DESCRIPTION: Industrial RS-232/RS-485/RS-422 to Fiber Optic Ring Slave with Terminal Blocks (SM ST) - 40KM	
SCALE: 1:1	UNIT: mm
ISSUE DATE: 06/19/2017	REV. NO.: 1.00



**Serial Comm**®  
Data Conversion Experts

MODEL: SER-FIBER-SM-4-ST

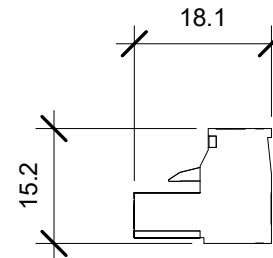
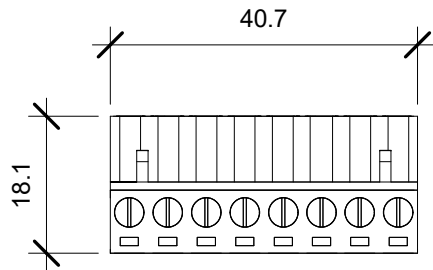
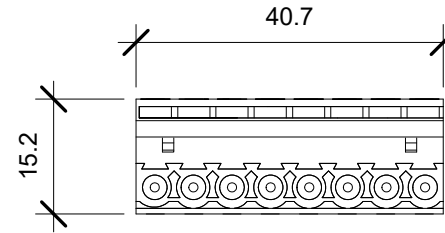
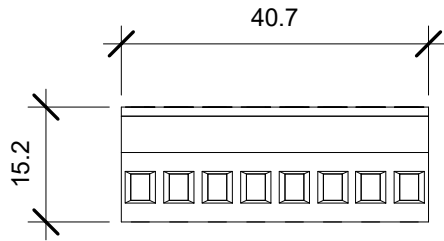
DESCRIPTION: Industrial RS-232/RS-485/RS-422 to Fiber Optic Ring Slave without Terminal Blocks (SM ST) - 40KM

SCALE: 1:1

UNIT: mm

ISSUE DATE: 06/19/2017

REV. NO.: 1.00



**Serial Comm**®  
Data Conversion Experts

MODEL: SER-FIBER-SM-4-ST

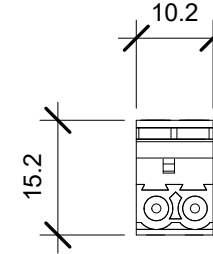
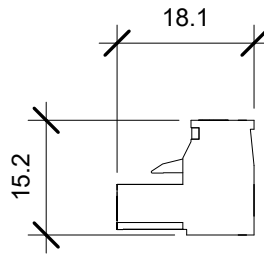
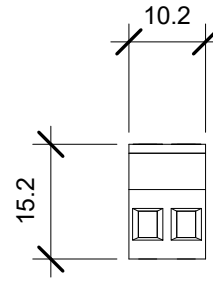
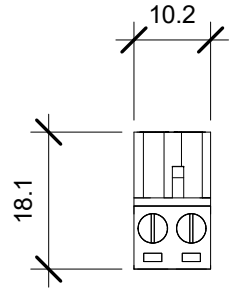
DESCRIPTION: 8-Position Terminal Block

SCALE: 1:1

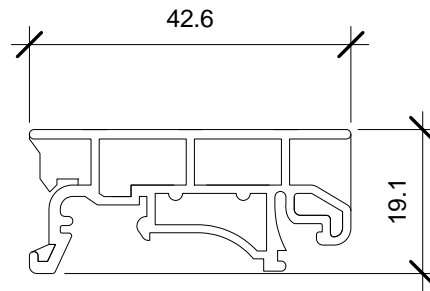
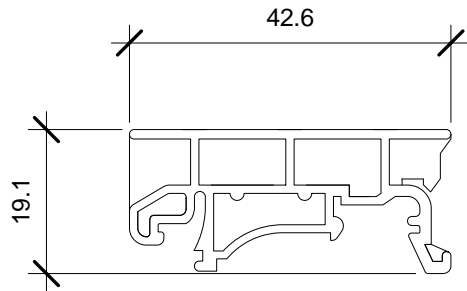
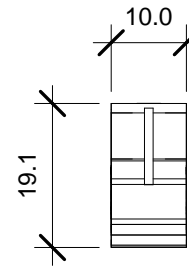
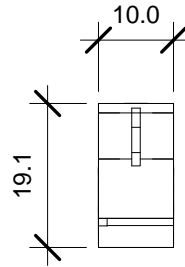
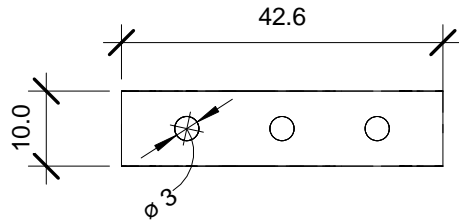
UNIT: mm

ISSUE DATE: 06/19/2017

REV. NO.: 1.00



MODEL: SER-FIBER-SM-4-ST	
DESCRIPTION: 2-Position Terminal Block	
SCALE: 1:1	UNIT: mm
ISSUE DATE: 06/19/2017	REV. NO.: 1.00



**Serial Comm**®  
Data Conversion Experts

MODEL: DIN Bracket

DESCRIPTION: Optional DIN Rail Bracket

SCALE: 1:1

UNIT: mm

ISSUE DATE: 11/08/2016

REV. NO.: 1.00