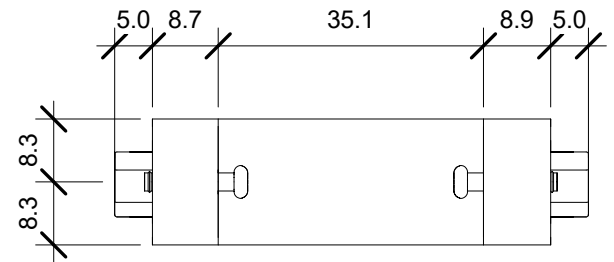
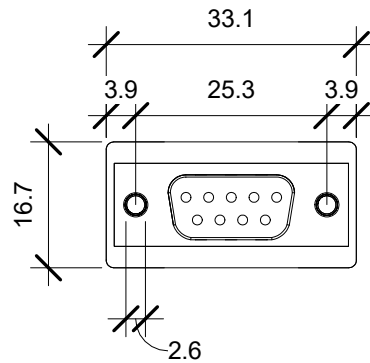
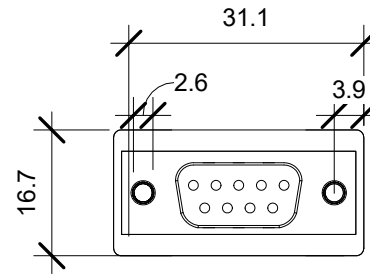
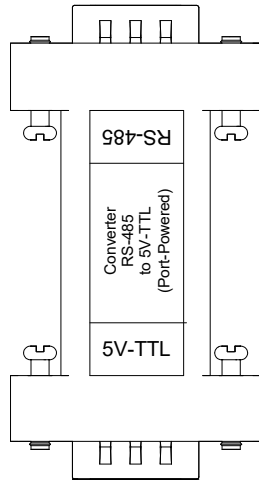


Serial Comm®
Data Conversion Experts

MODEL: TTL-485-5P	
DESCRIPTION: RS485 to 5V TTL (RS485 & TTL 5-Position Terminal Block)	
SCALE: 1:1	UNIT: mm
ISSUE DATE: 11/07/16	REV. NO.: 1.00



Serial Comm®
Data Conversion Experts

MODEL: TTL-485-5P

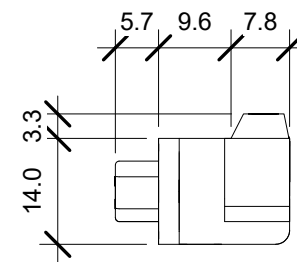
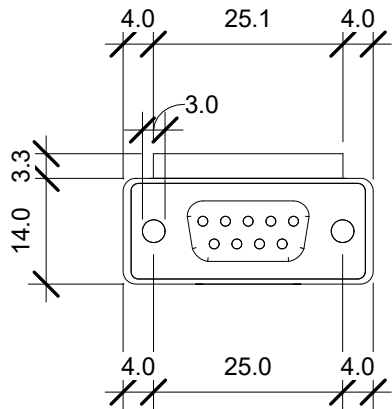
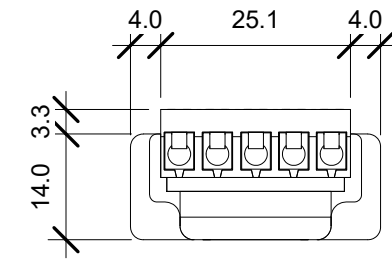
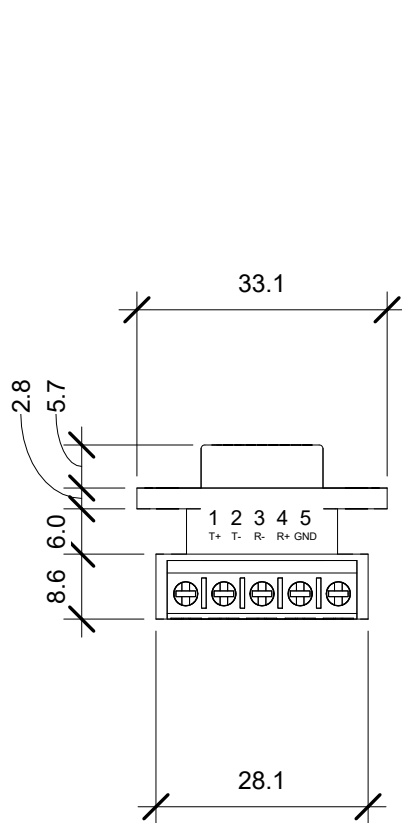
DESCRIPTION: RS485 to 5V TTL (No Terminal Blocks)

SCALE: 1:1

UNIT: mm

ISSUE DATE: 11/07/16

REV. NO.: 1.00



Serial Comm®
Data Conversion Experts

MODEL: TTL-485-5P

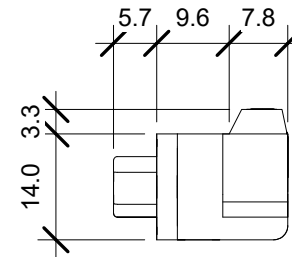
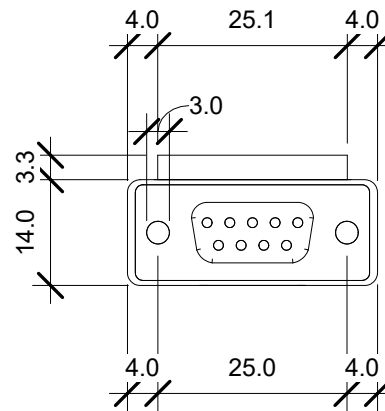
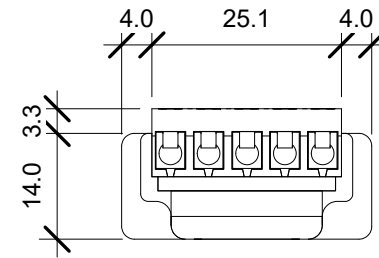
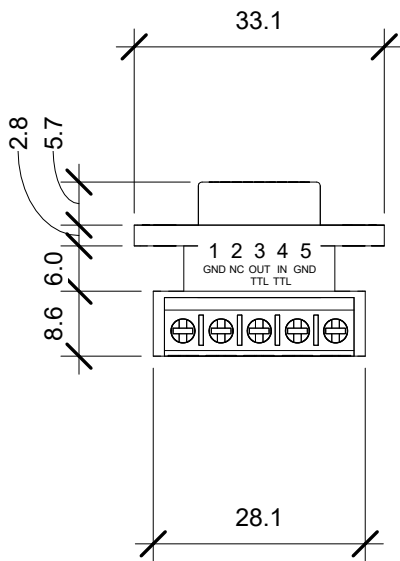
DESCRIPTION: RS485 5-Position Terminal Block

SCALE: 1:1

UNIT: mm

ISSUE DATE: 11/07/16

REV. NO.: 1.00



Serial Comm®
Data Conversion Experts

MODEL: TTL-485-5P

DESCRIPTION: TTL 5-Position Terminal Block

SCALE: 1:1

UNIT: mm

ISSUE DATE: 11/07/16

REV. NO.: 1.00