



**SerialComm**  
**VSP Management**  
**Software V1.2.7**  
**User Manual**

**Version 1.0 - January 20, 2015**

# CHANGE HISTORY

Version	Date	Description of Changes
1.0	January 20, 2015	Initial Publication of document

# COPYRIGHT NOTICE

This manual is copyright protected. All rights are reserved by Jeddy Ventures Limited Liability Company. No company or individual is authorized to duplicate or translate this manual in any form without the written permission of Jeddy Ventures Limited Liability Company.

# TRADEMARK NOTICE

SerialComm™ and its logo are registered trademarks of Jeddy Ventures Limited Liability Company. Other trademarks used in this manual belong to their corresponding companies. Usage of our trademarks is not permitted without written authorization.

# DISCLAIMER

Jeddy Ventures Limited Liability Company reserves the right to change the manual entirely or in part with no advance notice. Due to the improvement of the management software and the version update of the software, modifications may be required. This manual is only for your reference. Please contact us if you have any questions.

# TABLE OF CONTENTS

<b>1 SCOPE.....</b>	<b>4</b>
<b>2 PREPARATION .....</b>	<b>4</b>
<b>3 INSTALLATION OF VSP MANAGEMENT SOFTWARE .....</b>	<b>5</b>
<b>4 INSTALLATION OF ETH-SER-EE9 SERIAL DEVICE SERVER .....</b>	<b>10</b>
<b>5 VSP MANAGEMENT SOFTWARE INTERFACE .....</b>	<b>11</b>
<b>5.1 DEVICE MANAGER OPTION.....</b>	<b>11</b>
5.1.1 SEARCH.....	12
5.1.2 ADD .....	13
5.1.3 DELETE .....	13
5.1.4 NETWORK SETTINGS .....	14
5.1.5 WEB CONSOLE.....	14
5.1.6 PING .....	15
<b>5.2 VSP MANAGER OPTION .....</b>	<b>16</b>
5.2.1 NEW .....	17
5.2.2 MODIFY .....	19
5.2.3 DELETE .....	20
5.2.4 VIEW .....	20
5.2.5 DELETE ALL .....	21
<b>5.3 SERIAL MONITORING OPTION.....</b>	<b>22</b>
5.3.1 SETTINGS.....	22
5.3.2 START / STOP .....	23
5.3.3 CLEAR ALL .....	23
5.3.4 DISPLAY / PAUSE DISPLAY .....	23

## 1 SCOPE

This manual describes the VSP Management Software used with SerialComm's ETH-SER-EE9 Serial Device Server (Ethernet to Serial Converter). The VSP Management Software is a Microsoft Windows-based device management software for the SerialComm ETH-SER-EE9. This document describes the latest version of the VSP Management Software: Version V1.2.7. The examples used in this document will be presented using the Microsoft Windows 7 Operating System.

## 2 PREPARATION

The VSP Management Software must be first installed on the host Windows based PC or laptop that will connect to the ETH-SER-EE9 via an Ethernet network. A few simple steps need to be followed prior to installation:

- 1) The software supports Microsoft Windows 2000, XP, Vista, Server 2003, 2008, 2013, Windows 7 32 bit and 64 bit and Windows 8 32 bit and 64 bit.
- 2) Before installation of the software, it is important to temporarily turn off the Windows firewall and antivirus software. You can later turn them back on and allow rules to prevent the IP you will be using from being blocked by the firewall or anti-virus.

In Windows 7: the firewall can be turned off with the following sequence.

Start → Control Panel → System and Security → Windows Firewall

Enter the Windows Firewall Interface, choose: " off" and click "OK" – SEE FIGURE 2.1



FIGURE 2.1

### 3 INSTALLATION OF VSP MANAGEMENT SOFTWARE

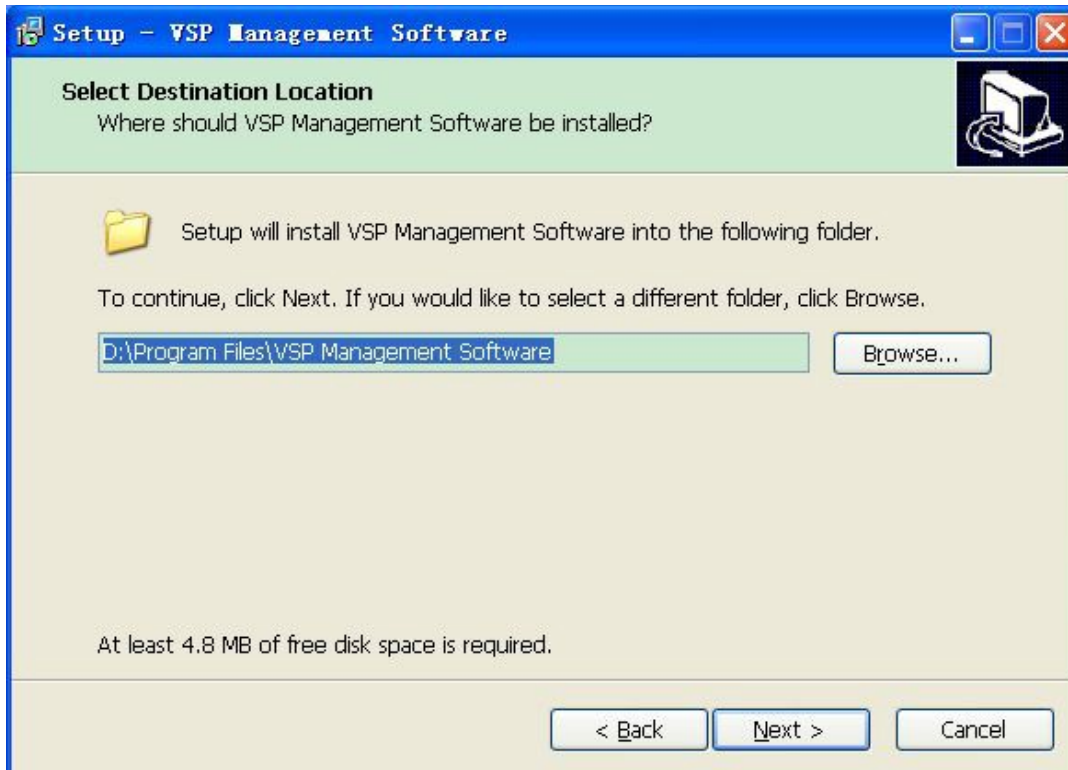
The VSP Management Software should be installed on the host Windows-based PC or laptop that ETH-SER-EE9 will be connected via Ethernet network. The installation procedure is as follows:

- 1) Copy the VSP Management Software Executable from the CD that comes with the ETH-SER-EE9 Product.
- 2) Run the Executable file to start the installation process.
- 3) The Setup – VSP Management Software screen will appear. SEE FIGURE 3.1



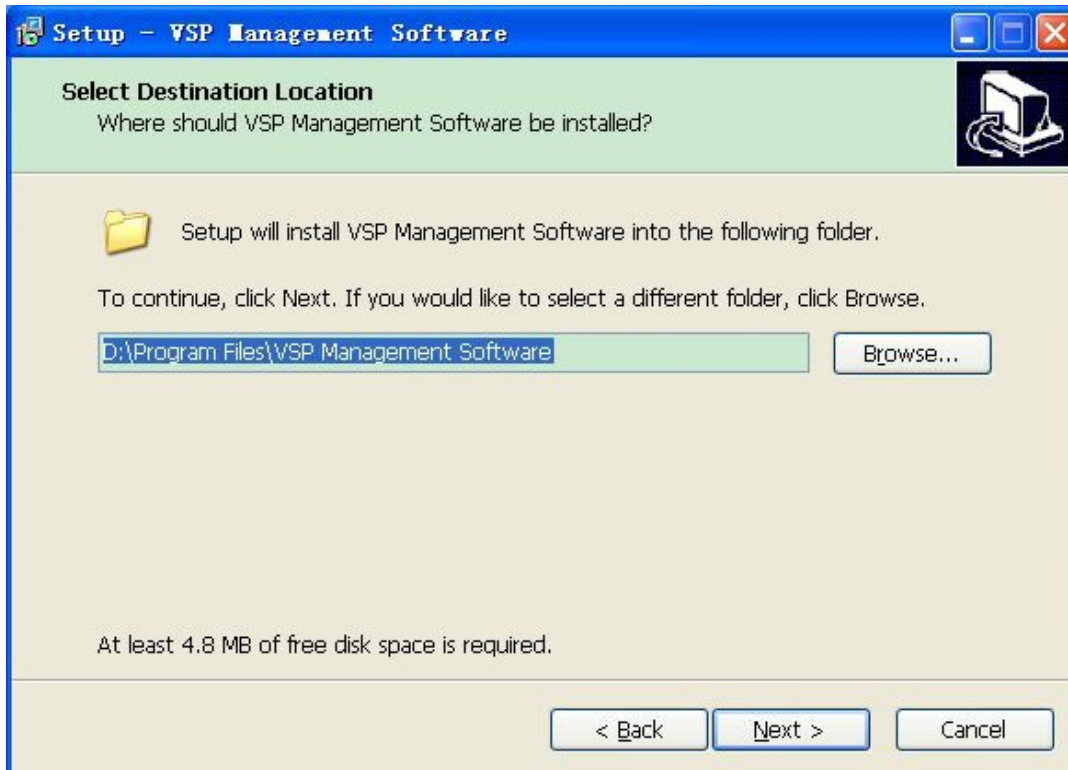
**FIGURE 3.1**

- 4) Select the "Next" button to continue. Select the "Cancel" button to abort. The installation can be cancelled at any time throughout the process by clicking on the "Cancel" button.
- 5) The following screen shows you where the software will be loaded on the host. To use the default location shown, click the "Next" button. You can also choose a different location by typing it in, or by selecting it using the "Browse" button. Click on the "Next" button to take you to the next screen. SEE FIGURE 3.2



**FIGURE 3.2**

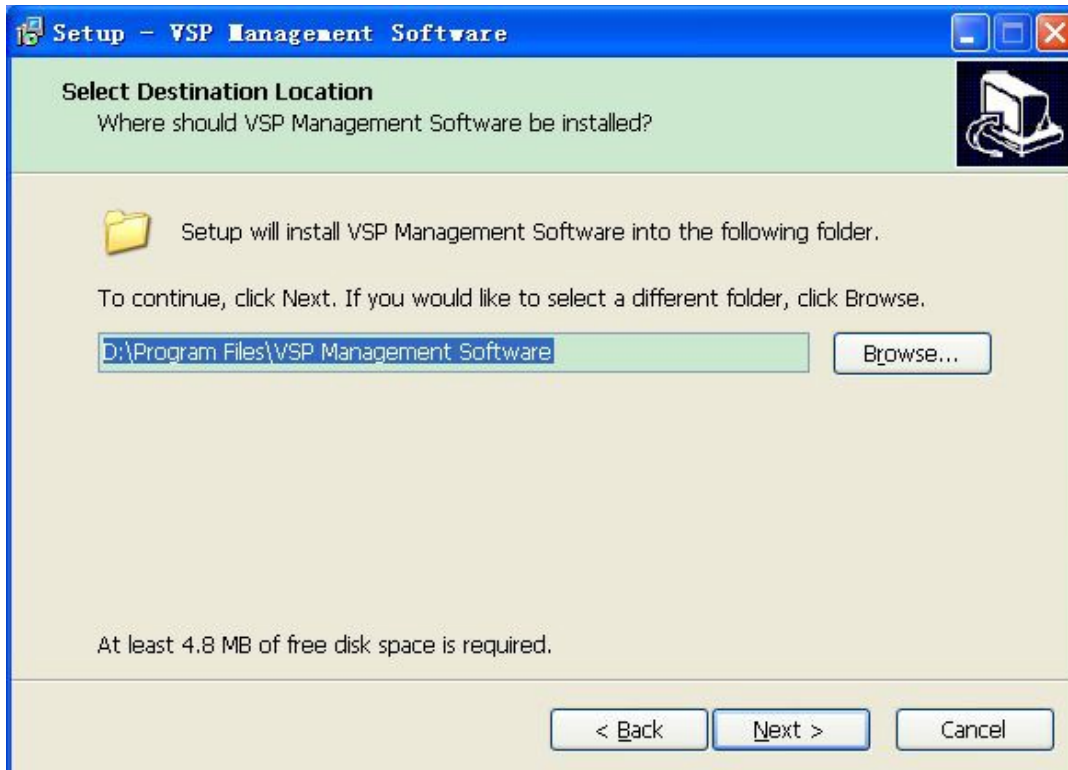
- 6) The next screen creates a program shortcut. To choose the default shortcut click on the “Next” button. If you want to change the shortcut name, type it in or select it by clicking on the “Browse” button. When you are done click on the “Next” button. SEE FIGURE 3.3



**FIGURE 3.3**

- 7) The “Ready to Install” screen will appear. Click on the “Install” button to start the installation of the software files. A pop-up screen will appear, saying “Installing Drivers Please Wait”. SEE FIGURE 3.4





**FIGURE 3.4**

- 8) The "Completion" screen will appear. Click on the "Finish" button to complete the installation. This concludes the installation of the VSP Management Software.
- 9) You should now see the VSP Management Software on the Operating System Programs Menu. SEE FIGURE 3.5

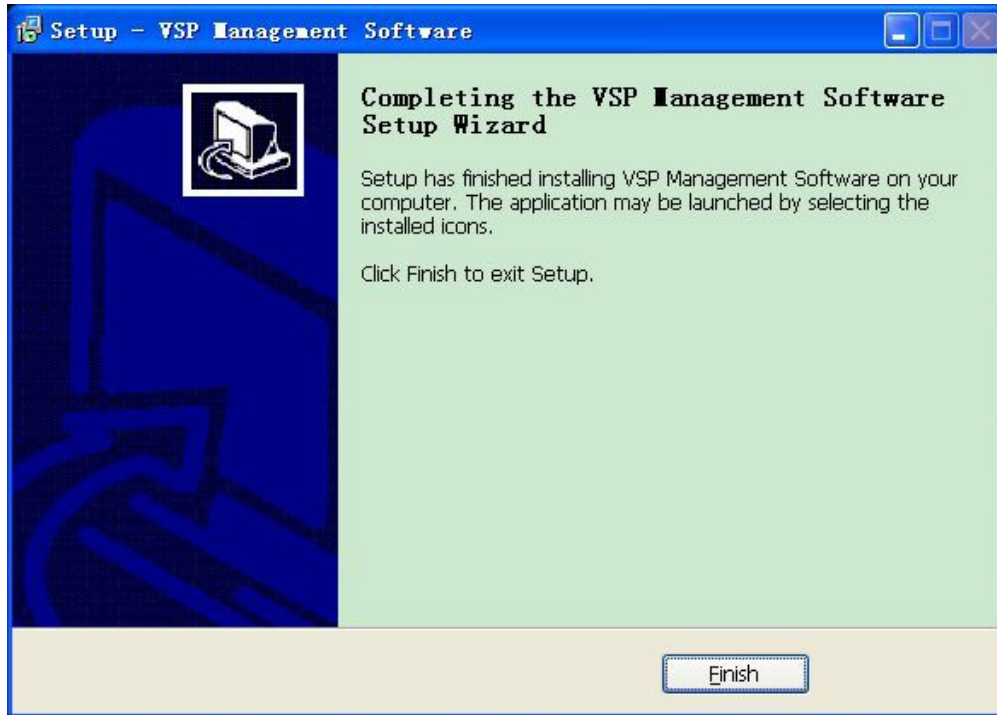


FIGURE 3.5

## 4 INSTALLATION OF ETH-SER-EE9 SERIAL DEVICE SERVER

Now that the VSP Management Software is installed, in order for it to function properly it needs to communicate with the ETH-SER-EE9. The ETH-SER-EE9 now needs to be connected to the host with the VSP software installed.

- 1) The ETH-SER-EE9's default IP address is 192.168.1.X subnet 255.255.255.0 for the network segment. The default user name is admin and the default password is admin. These default settings can be changed later after installation.
- 2) Unpack the ETH-SER-EE9. It includes the unit, a power supply, and an Ethernet cable.
- 3) Connect the power supply to the converter. Wire V+ of the power supply goes to terminal post V+ of the converter and wire V- of the power supply goes to terminal post V- of the converter.
- 4) Power the ETH-SER-EE9. The power green LED should be lit.
- 5) Connect the Ethernet cable to the ETH-SER-EE9; either directly to the PC, laptop, or to the connecting network. Once the Ethernet cable is attached, the green Link/ACT LED should be lit.

## 5 VSP MANAGEMENT SOFTWARE INTERFACE

The VSP Management Software is the ETH-SER-EE9 device management system. It is very simple to use. It has two main functions 1) to manage the network settings of the ETH-SER-EE9 and to define and manage a virtual serial COM port. Now run the VSP Management Software. The following screen will appear. SEE FIGURE 5.1

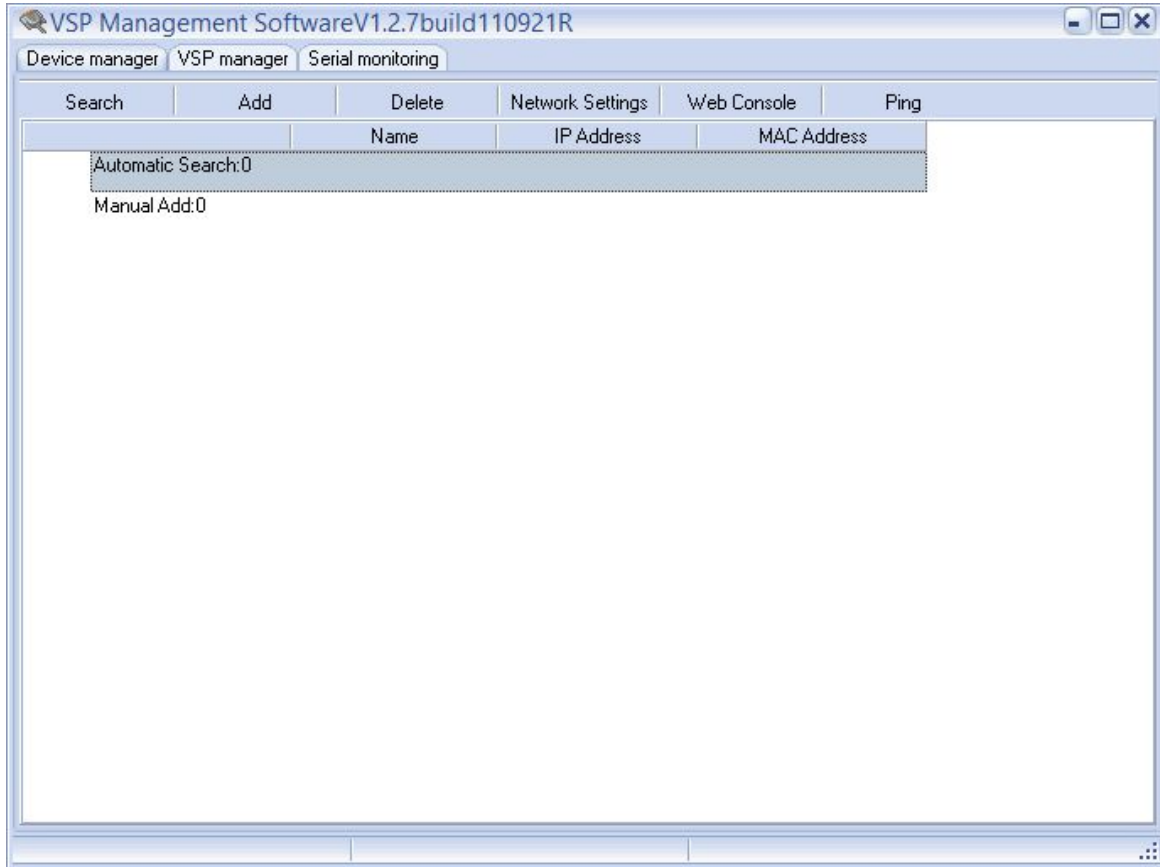


FIGURE 5.1

The software is divided into three sections: Device Manager, VSP Manager, and Serial Monitoring. The default view is the Device Manager.

### 5.1 DEVICE MANAGER OPTION

The Device Manager serves as the device management utility of the ETH-SER-EE9. It has six options: “Search”, “Add”, “Delete”, “Network Settings”, “Web Console”, and “Ping”. SEE FIGURE 5.1

### 5.1.1 SEARCH

The Search Function searches for the ETH-SER-EE9 on the same network segment as the host. To find the device the VSP uses UPD broadcast. The VSP should return the device name, IP address, and Mac address. If the ETH-SER-EE9 is on a different network segment the IP address must be added manually using the Add function. SEE FIGURE 5.2

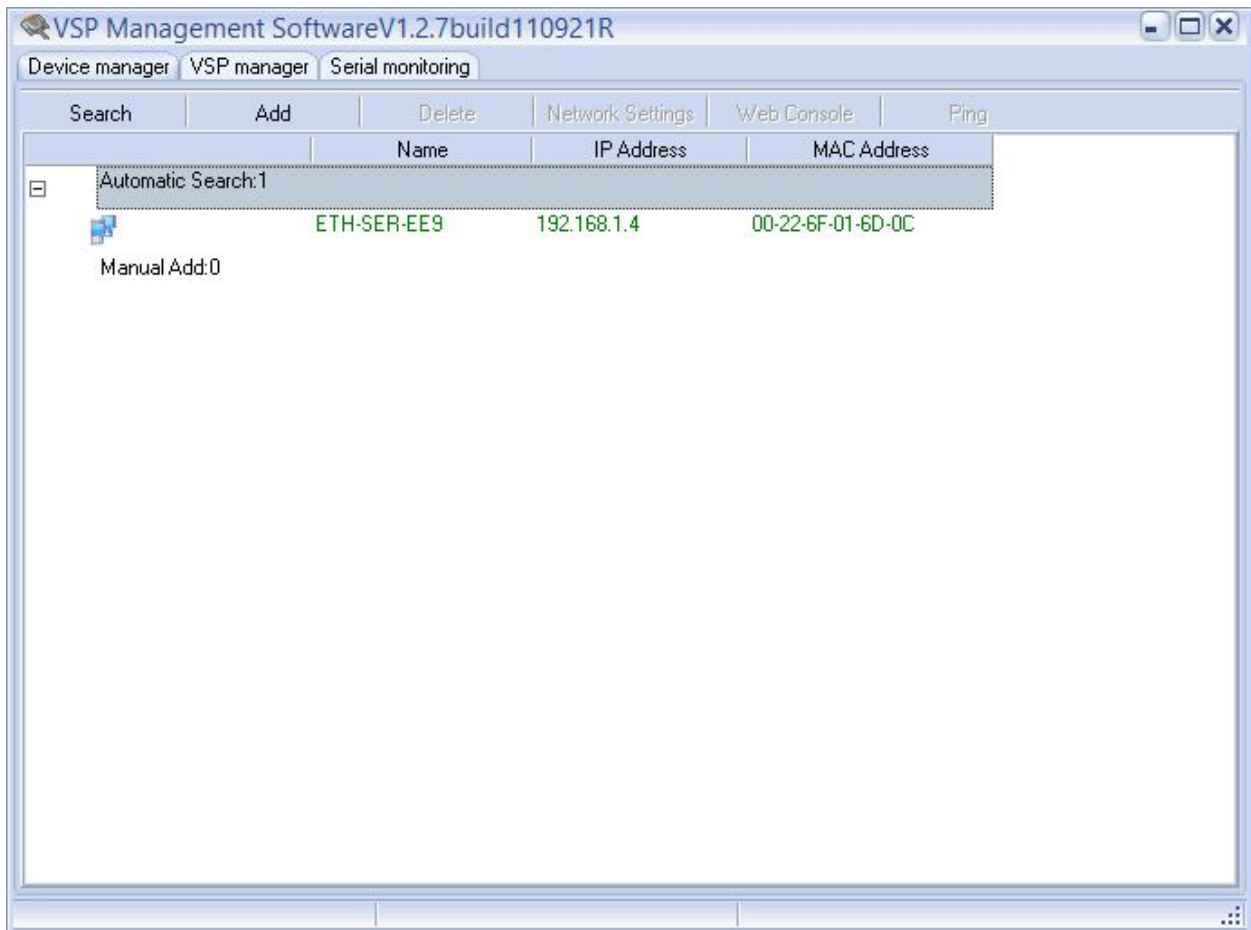


FIGURE 5.2

### 5.1.2 ADD

The Add Function manually adds the ETH-SER-EE9 to the VSP. This function is only necessary if the device is on a different network segment than the host. You can add the device by entering in its IP address and clicking on the ADD button. SEE FIGURE 5.3

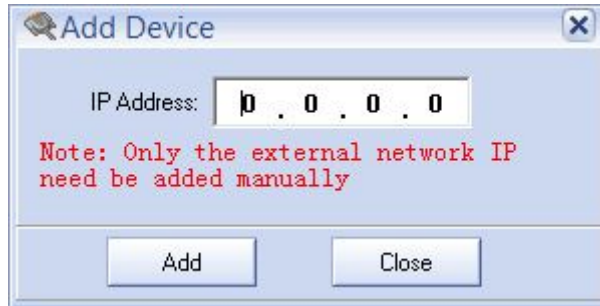


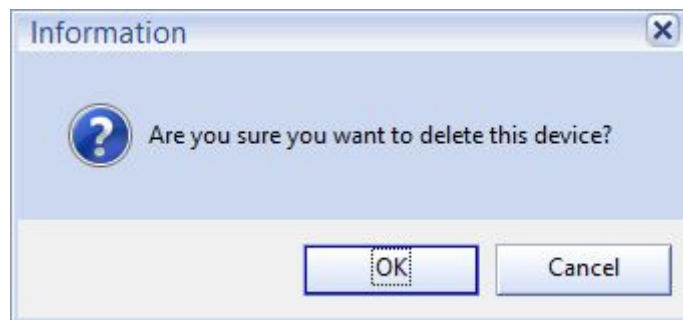
FIGURE 5.3



To perform the Add function it is necessary to know the IP address of the device. The default IP address is 192.168.1.254 subnet 255.255.255.0. If you do not know the IP address, please connect the device into the same network segment, click Search and the VSP Software will display the IP address.

### 5.1.3 DELETE

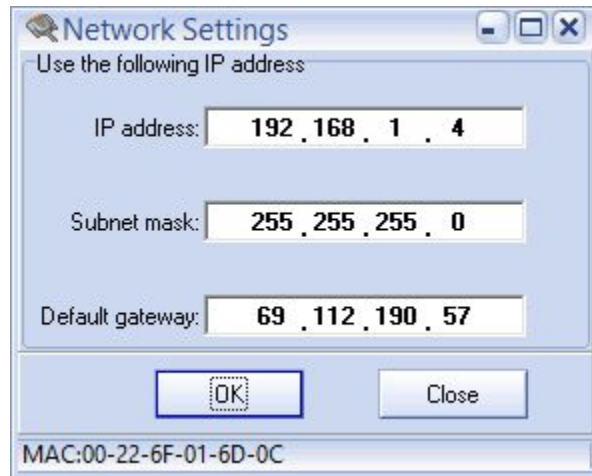
The Delete Function deletes either a searched device or added device from the VSP Software. SEE FIGURE 5.4



**FIGURE 5.4**

### **5.1.4 NETWORK SETTINGS**

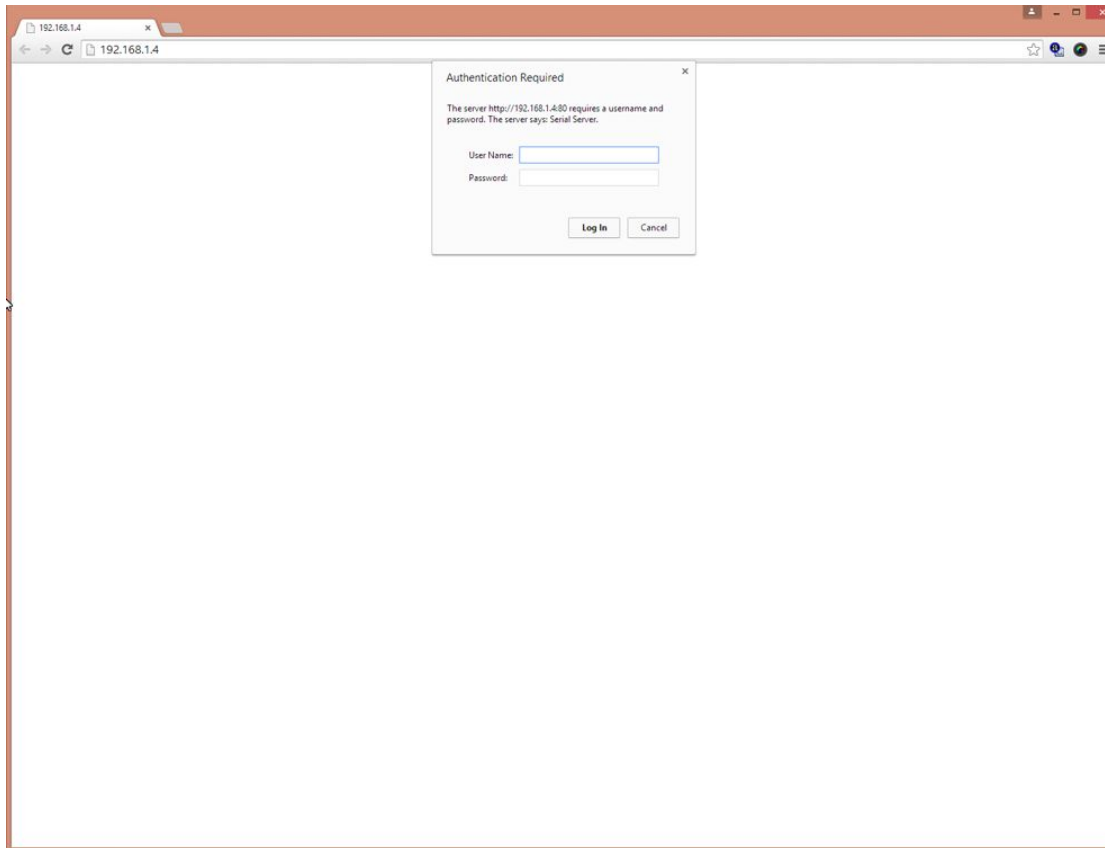
The Network Settings allows you to modify the IP address, Subnet mask, and default gateway of the selected device. SEE FIGURE 5.5



**FIGURE 5.5**

### **5.1.5 WEB CONSOLE**

The Web Console function opens the default browser with the selected device IP address. This should initiate the WEB configuration interface. If the ETH-SER-EE9 is responsive the username and password credentials message box should appear. SEE FIGURE 5.6



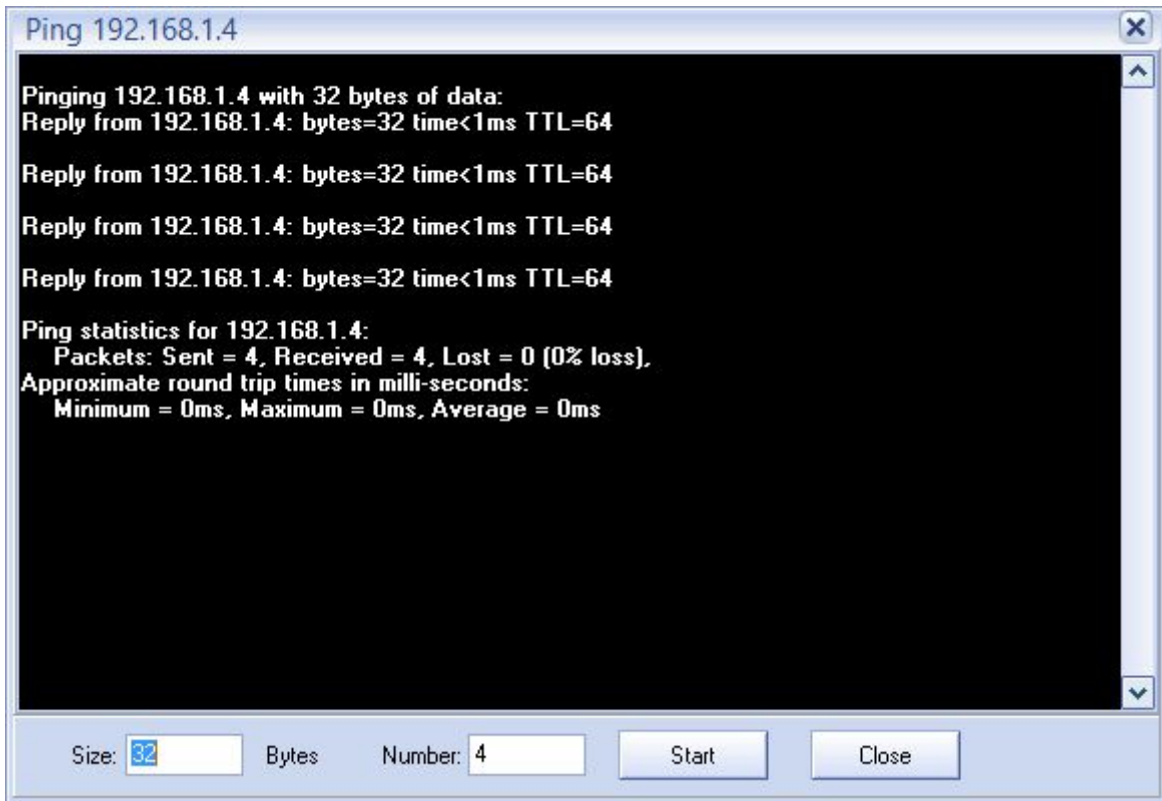
**FIGURE 5.6**



**Please note: The default username is “admin” and default password is “admin”.**

### **5.1.6 PING**

The Ping Function sends a series of four ping test signals to determine if the device is responsive. SEE FIGURE 5.7

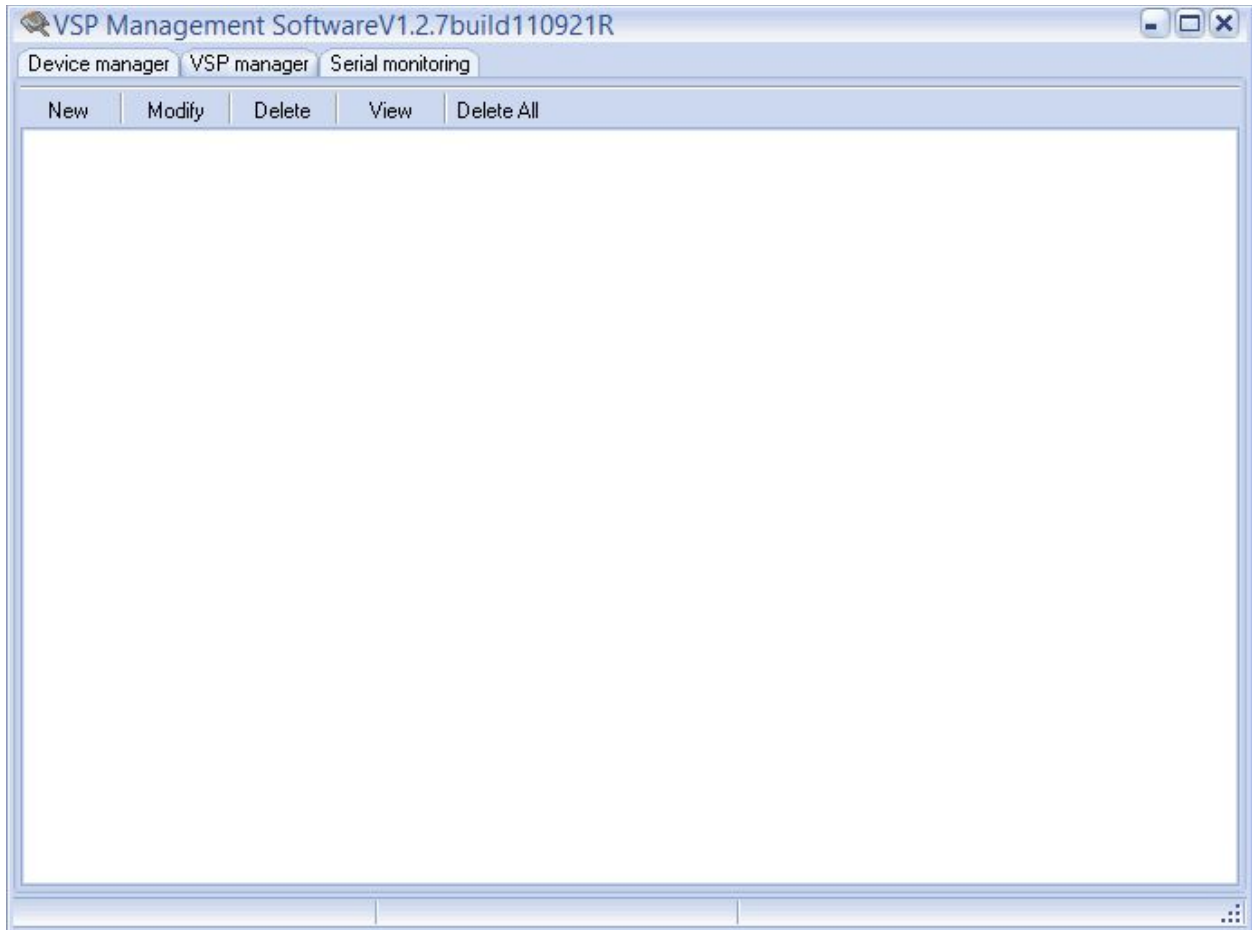


**FIGURE 5.7**

## **5.2 VSP MANAGER OPTION**

The VSP Manager serves as the virtual serial port management utility of the ETH-SER-EE9. It has five options: "New", "Modify", "Delete", "View", and "Delete All". SEE FIGURE 5.8

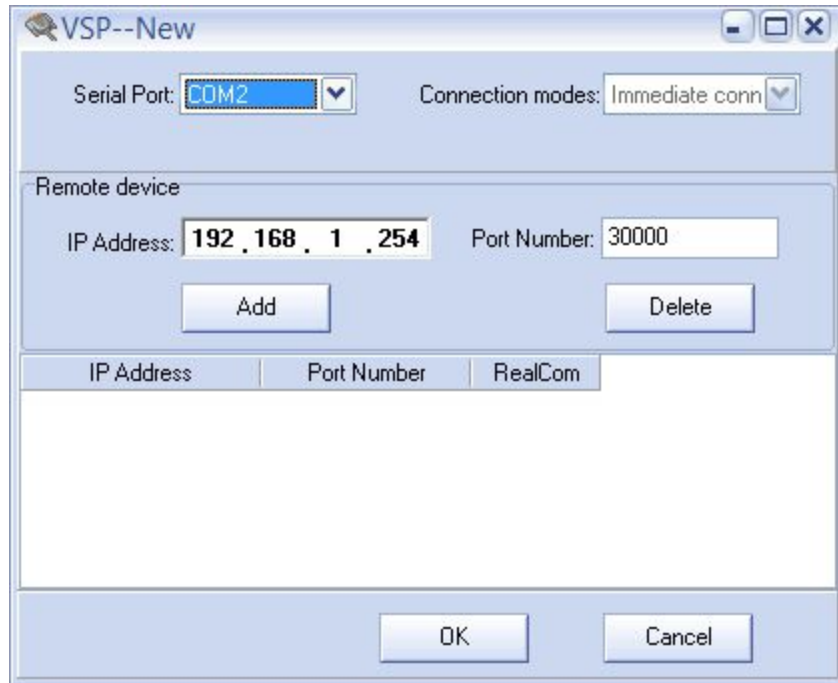




**FIGURE 5.8**

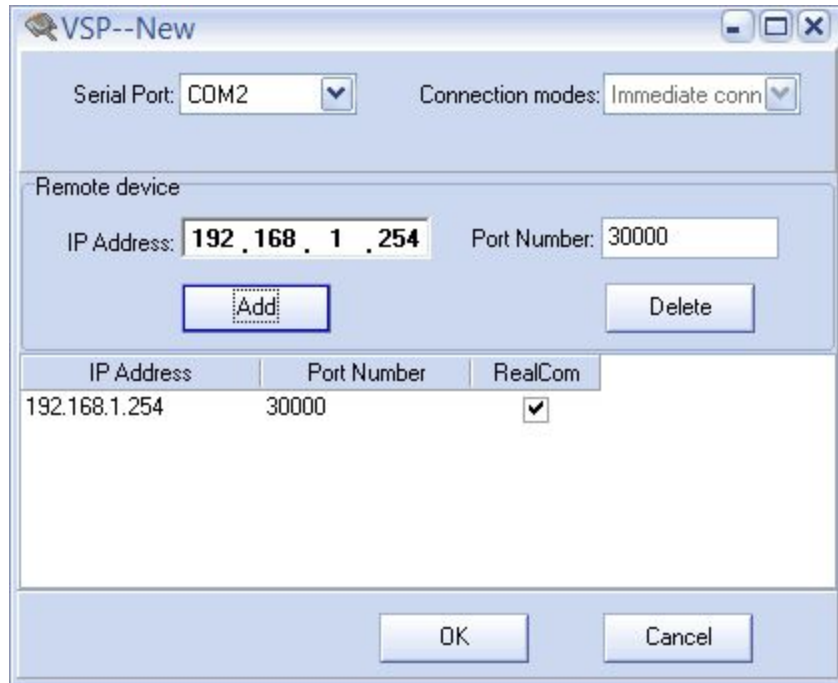
### **5.2.1 NEW**

The New Function creates a new virtual serial port and configures the device IP and port number. First select the unused Serial Port you wish to use by selecting a COM port from the drop down menu. Then enter the IP Address and Port Number of the remote device. Click "Add" and you will see the virtual port below. SEE FIGURE 5.9



**FIGURE 5.9**

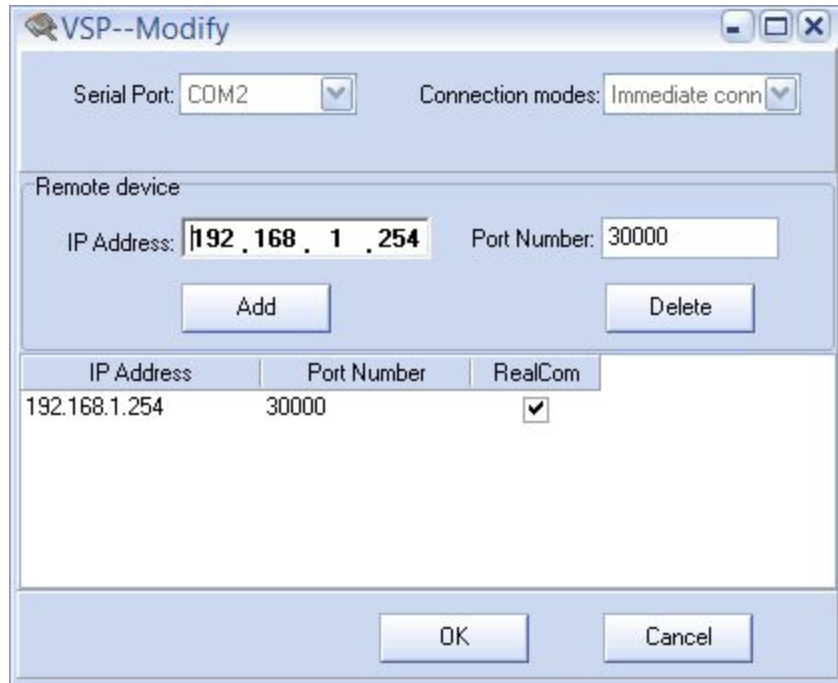
Then you should check the RealCom Option. The RealCom option allows the PC to treat the virtual serial port as a local COM Port. If you are using a Terminal Program the RealCom must be selected. You can always delete the serial port by clicking the "Delete" button as well. SEE FIGURE 5.10



**FIGURE 5.10**

### **5.2.2 MODIFY**

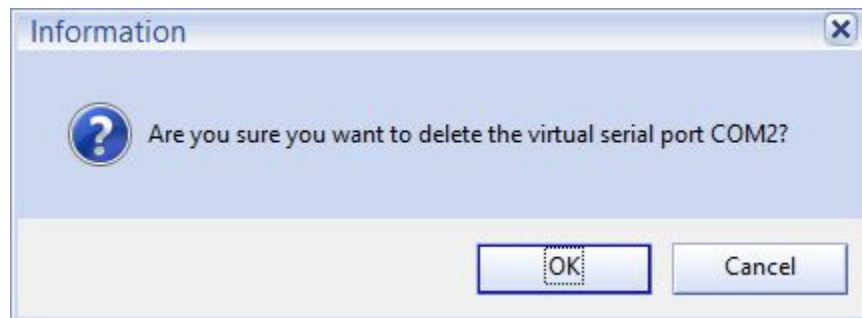
The Modify Function modifies the virtual serial port. It has the same functionality as the New Function with the exception of altering the COM Port. SEE FIGURE 5.11



**FIGURE 5.11**

### 5.2.3 DELETE

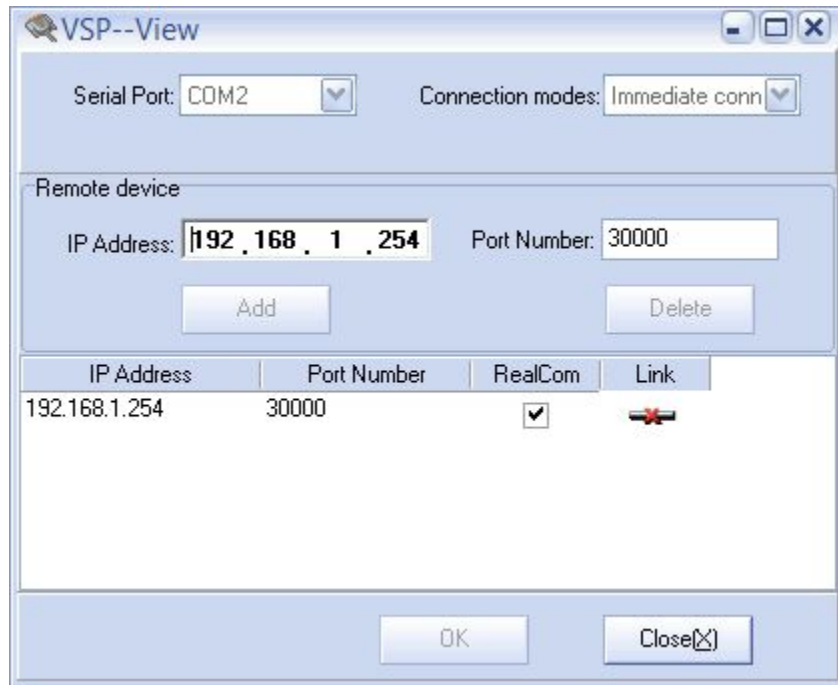
The Delete Function deletes the selected virtual serial port. Before deleting the virtual serial port it will ask you to confirm deletion. This delete function will not delete any open virtual serial ports. The port must not be in use. SEE FIGURE 5.12



**FIGURE 5.12**

### 5.2.4 VIEW

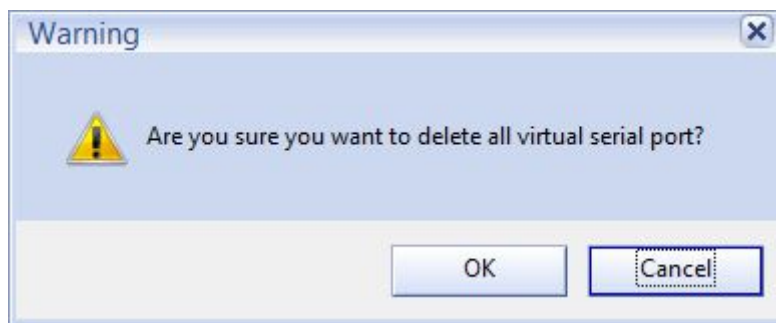
The View Function allows you to view the settings of the selected virtual serial port. None of the settings can be altered using this function. SEE FIGURE 5.13



**FIGURE 5.13**

### 5.2.5 DELETE ALL

The Delete All Function deletes all assigned virtual serial ports. Before deleting the virtual serial ports it will ask you to confirm deletion. This delete function will not delete any open virtual serial ports. The port must not be in use. SEE FIGURE 5.14



**FIGURE 5.14**

## 5.3 SERIAL MONITORING OPTION

The Serial Monitoring Option is a very simple serial monitor to monitor the virtual COM Port. It has four options: “Settings”, “Start/Stop”, “Clear All”, and “Display/Pause Display”. This monitoring option is very simple tool. We recommend using a much more robust Terminal Program. AccessPort, a free downloadable software from our [www.serialcomm.com](http://www.serialcomm.com) site, is a very good choice: it is robust in features yet simple to use. SEE FIGURE 5.15

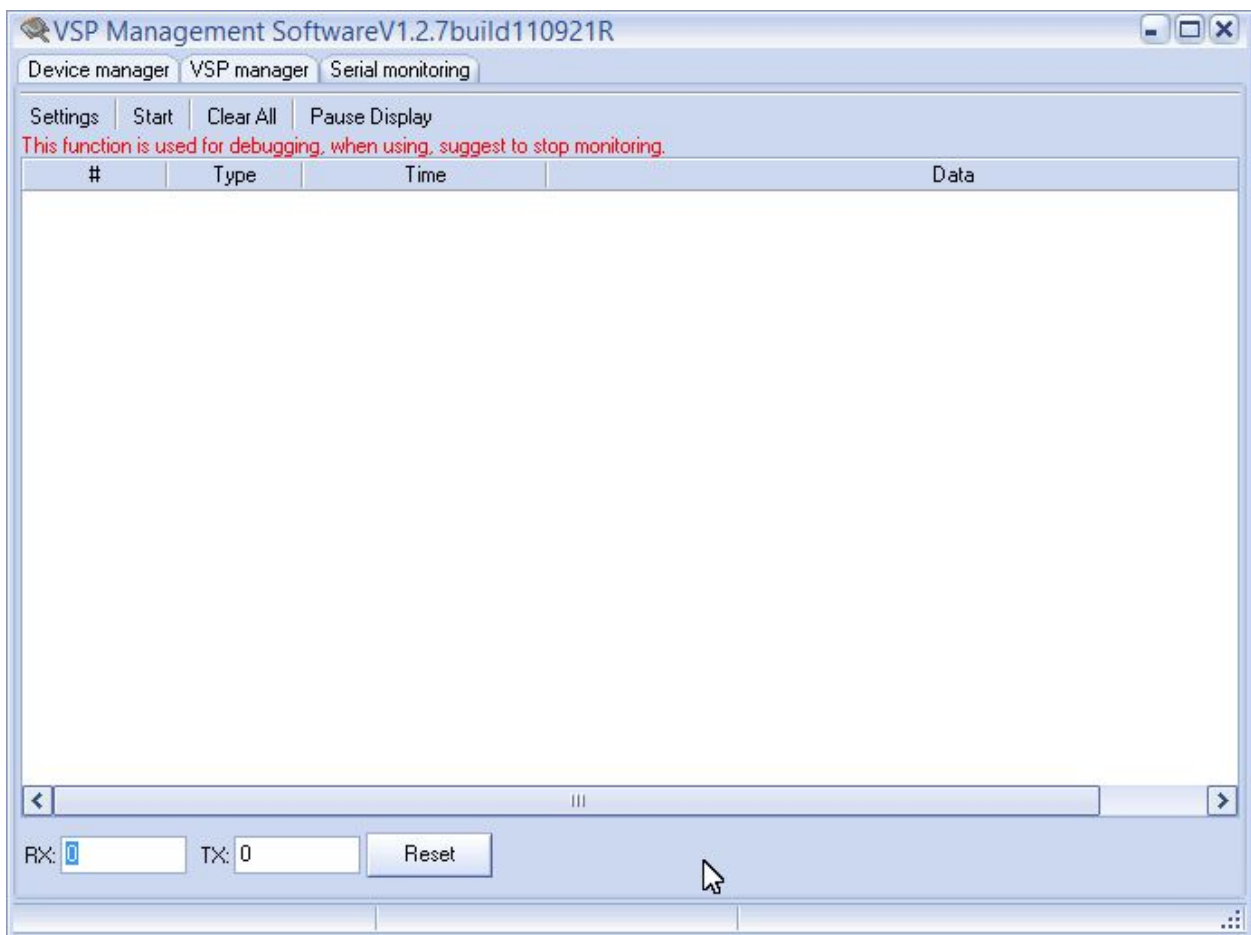


FIGURE 5.15

### 5.3.1 SETTINGS

The Settings Function selects the COM port you want to monitor and whether you want the data to be displayed in HEX number format or ASCII character format. SEE FIGURE 5.16



**FIGURE 5.16**

### **5.3.2 START / STOP**

The Start/Stop Function toggles between starting the monitor from viewing data and stopping the monitor from viewing data.

### **5.3.3 CLEAR ALL**

The Clear All Function clears the display of monitored data.

### **5.3.4 DISPLAY / PAUSE DISPLAY**

The Display/Pause Display Function toggles between Display and Pause Display. When Display is selected the data is being monitored. When Pause Display is selected the data is not stopped but the display is paused from monitoring data.